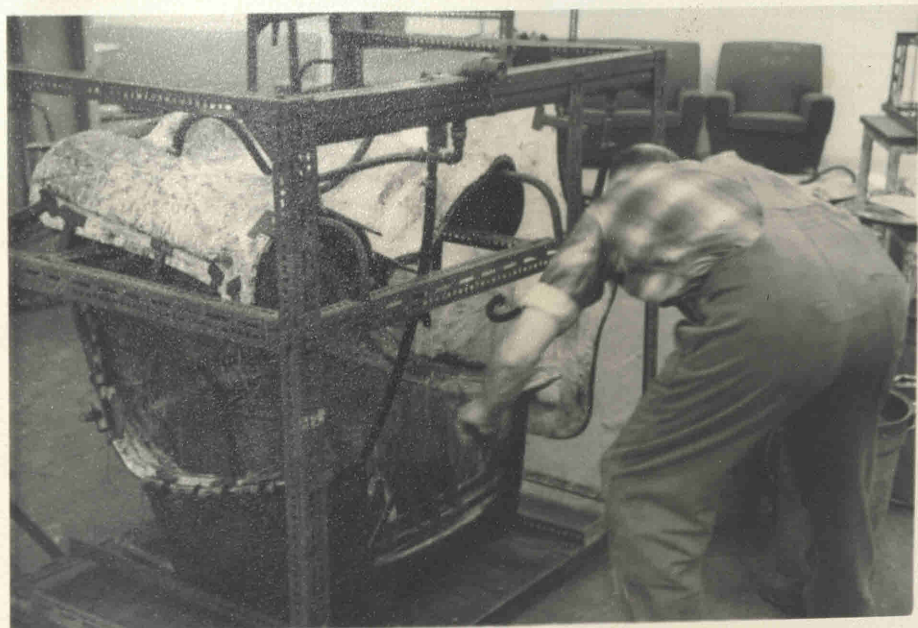




N.I. MARK I FRAME



N.I. MARKS I and II



Harry Wildman with cape containing N.I. Main Shell
Arms and Back Upright



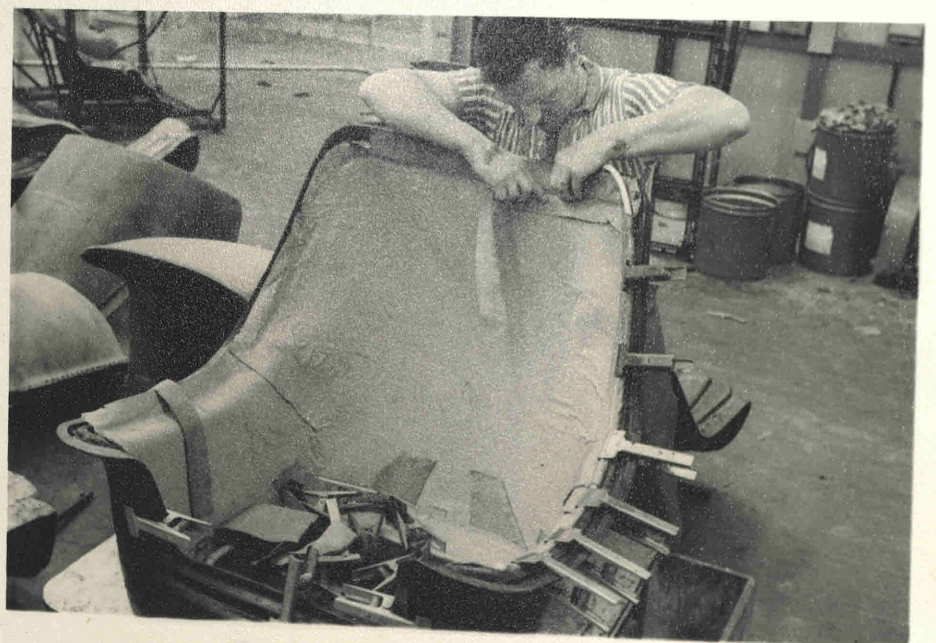
Bob Branch and foreman M. Peachey and N.I.



Tony Carter moulding N.I. arms



Bob Branch with N.I.

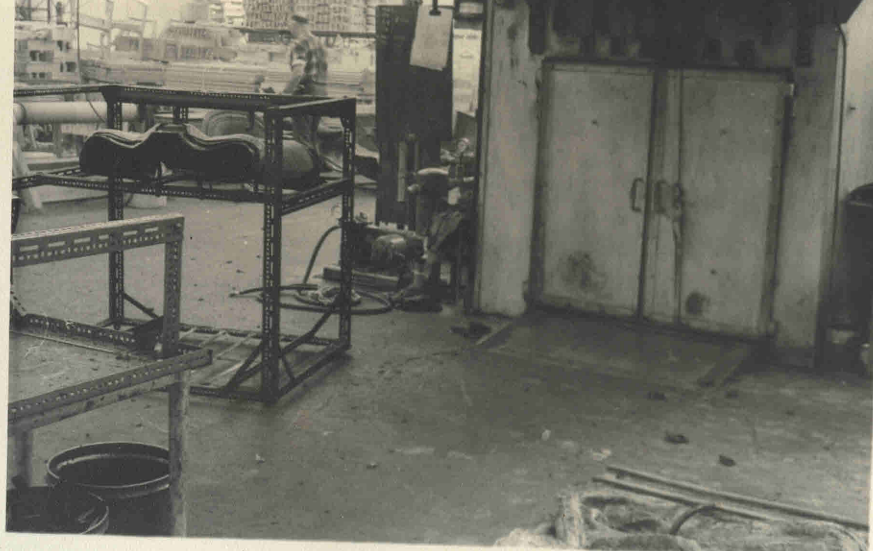


The last N.I. Shell

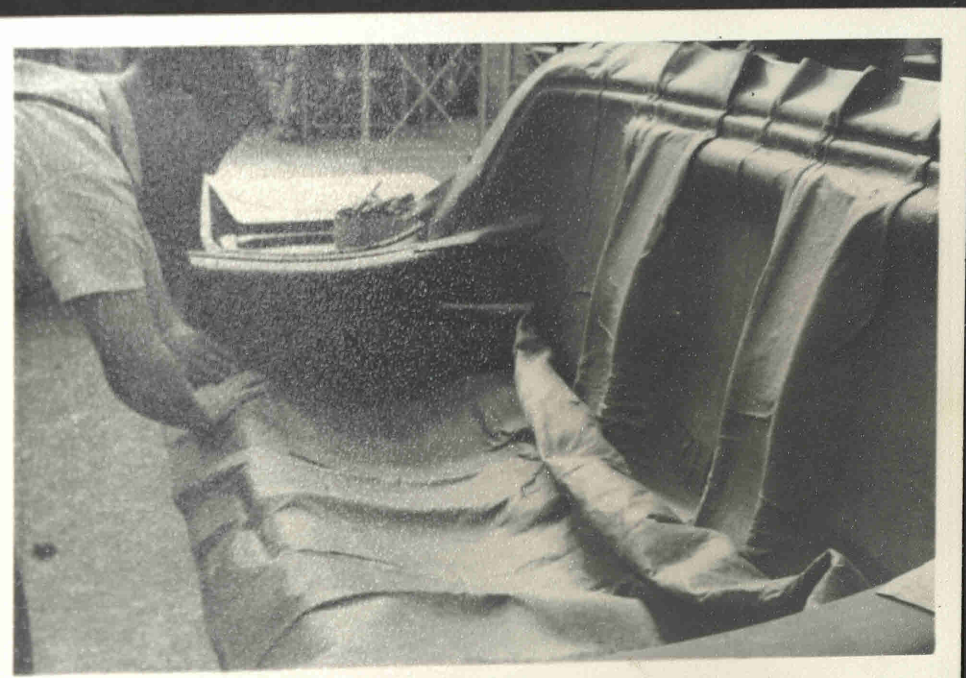
August 1966



Bob Branch and Harry Wildman



Oven entrance with capes and accessories



Tony Carter with N.9.

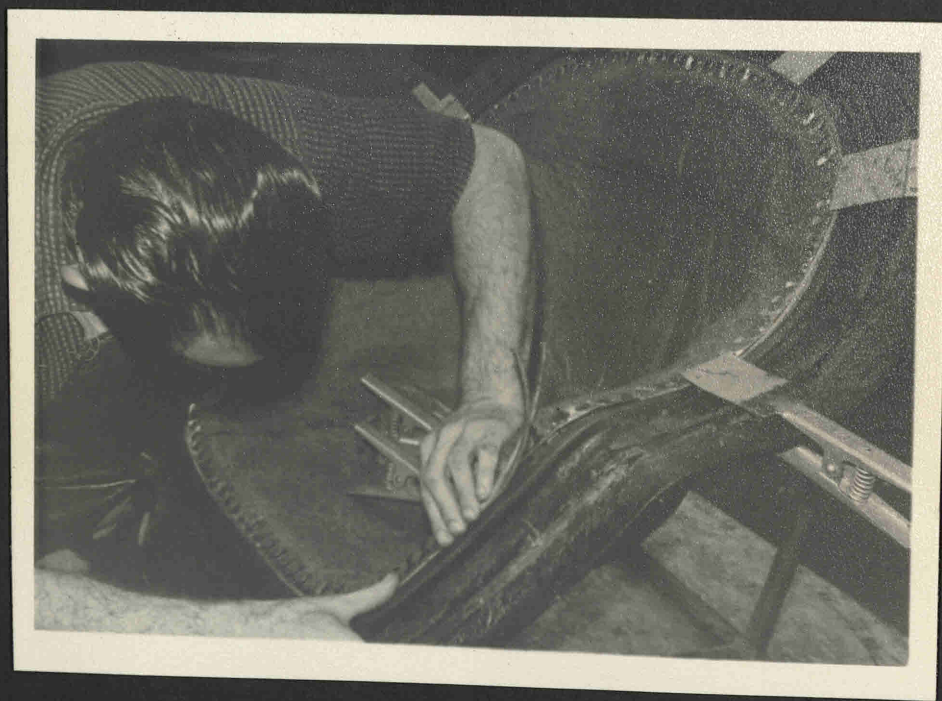




N. 8. and N. 4. Mould and Bags with N. 1. arm moulds behind



N. 4. Bag and Mould



Bob Branch moulding N. 4.

August 1966





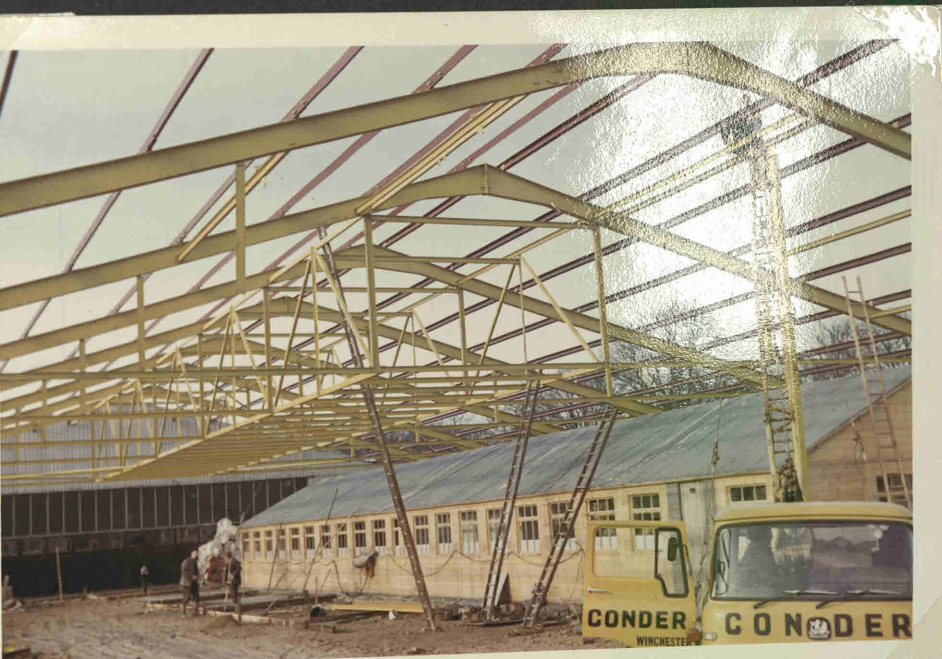
Construction of temporary hut for curtain cutting press.

DECEMBER 1967.





Stages in erection of the extension
taken over by P.K. 1st MAY 1968





*130 recliners to 10 Downing St.
Christmas 67*

