



No 98 L.R./u



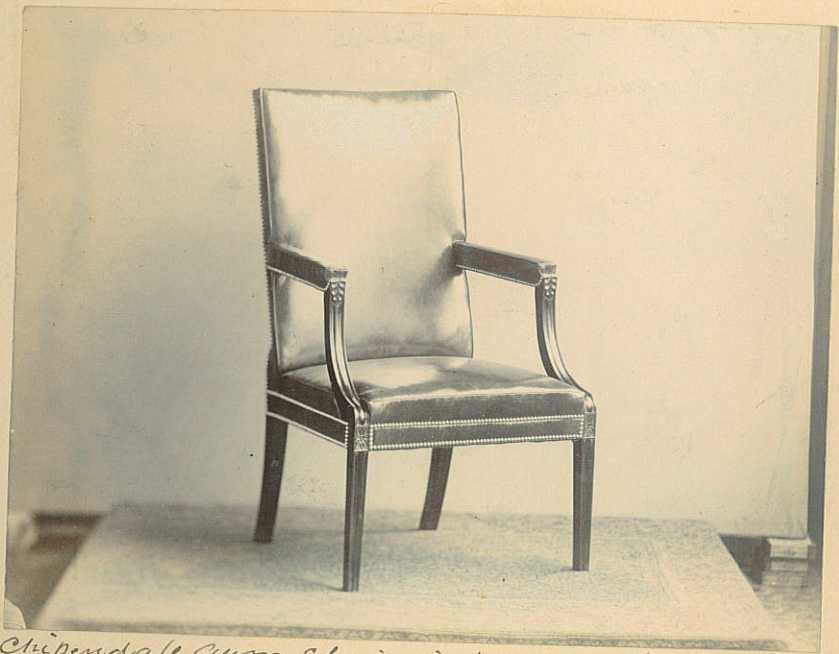
No 30. W.K./-



No 36 w Jap. RH/-



No 99 LH/-



Chippendale Arm Chair in Morocco 60/KH/—



No 57. in Tap - 10/8/-



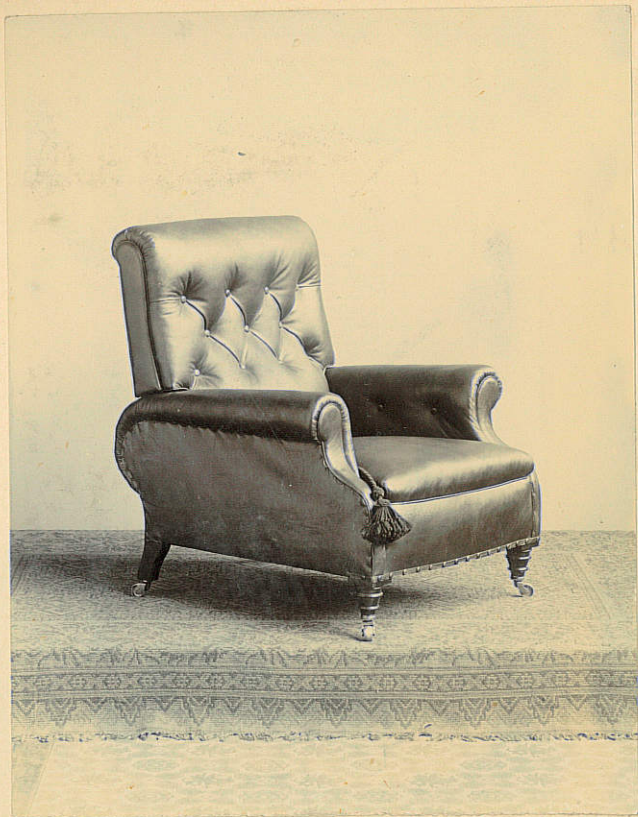
No 33. Gap. R.H.



No 95. Chair - L/KL/-



№ 77 16H/-



№ 43 in Moscow - W/KH/-

16 No 43



No 42. adj couch cret. 20/-



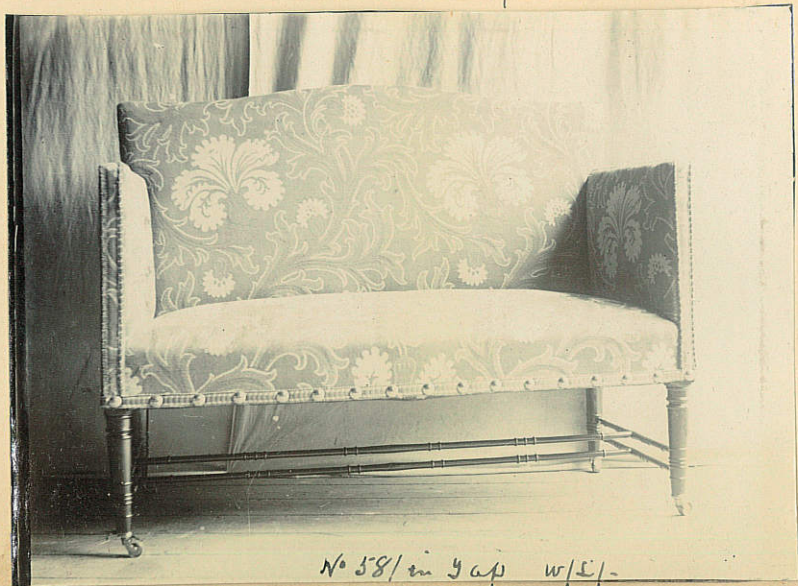
No 60 R.L.-



No 76 in Saps W.M.-



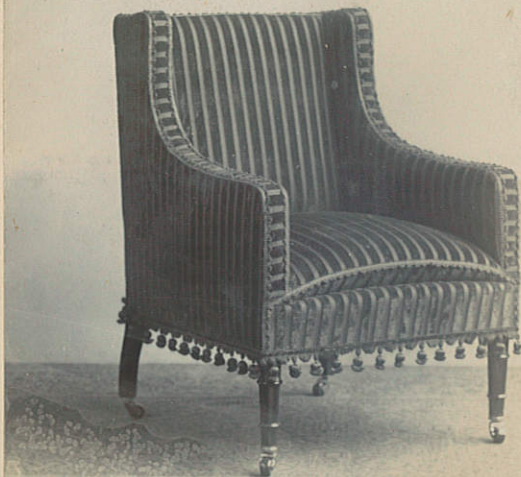
No 47. Jap Ed/-



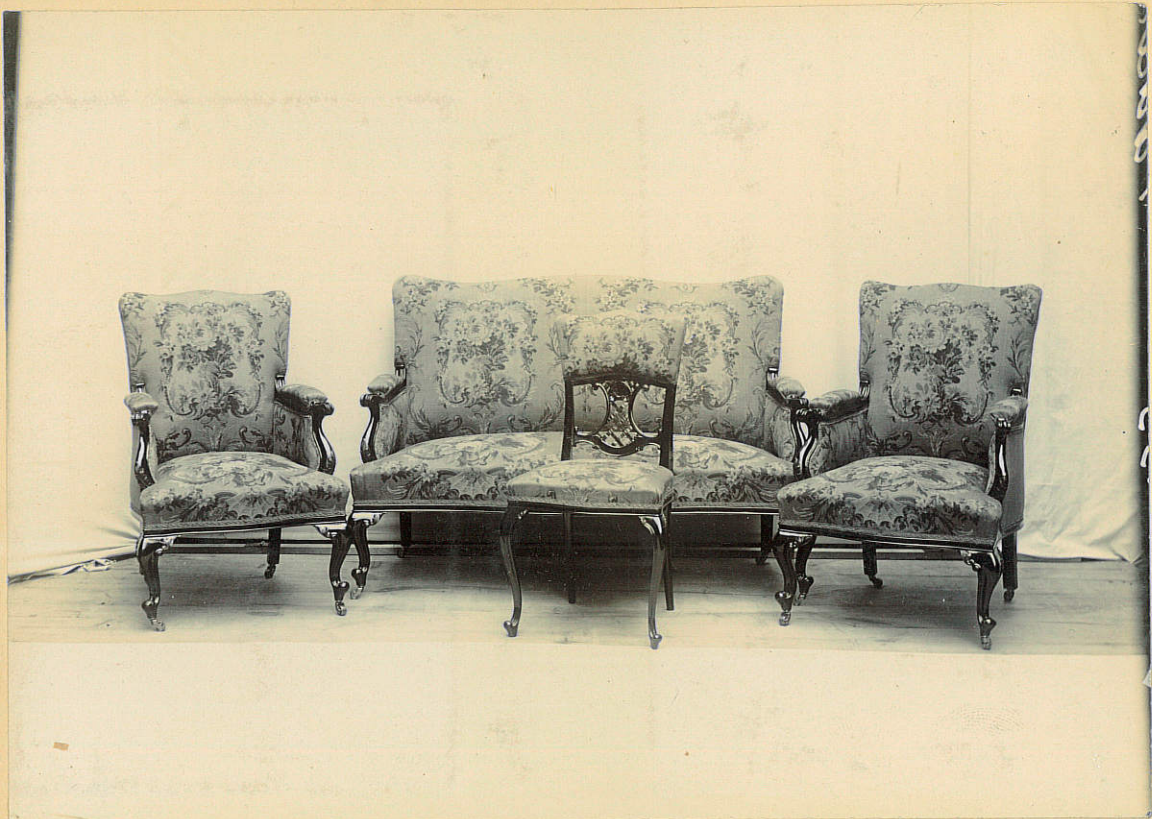
No 58/ in 9 ap w/E/-



No 34. in Lap. 27-1-



No. 43. shipe plush. O&J-



4 piece suite silk jap. wk/-/-

11/16

Seven piece suite
1894



No 98. Sap. 5/21-



No 95. wnt-



No 100. in Jap. J.E/w.
Yokohama. W.H.-



No 86 in cret. W.H.-



No 110 chair in Morocco. S/KH/-



Chipendale Settee O/21-



N. 95 Settee R/KH1-



№109. in Morocco. 02/1-



№108 in Morocco. E/KH/1-



N^o 102.



N^o 106



No 101



No 105

16



no 76. 04/-

15



↑
 Bow
 s/s ↗
 ✓



No 107.



No 126. in Top t6/-



Balfour Settee
No. 38!