

FPA061

Wm. Parker.
~~500 ...~~
44 = Whitfield St
1894

The

Adjustable Album

(Entered at Stationers' Hall.)

The leaves of this Album may be removed and interchanged in a moment. Leaves may be added or taken away, making the book as thick or as thin as desired, by simply undoing the strap and adjusting the loose back.

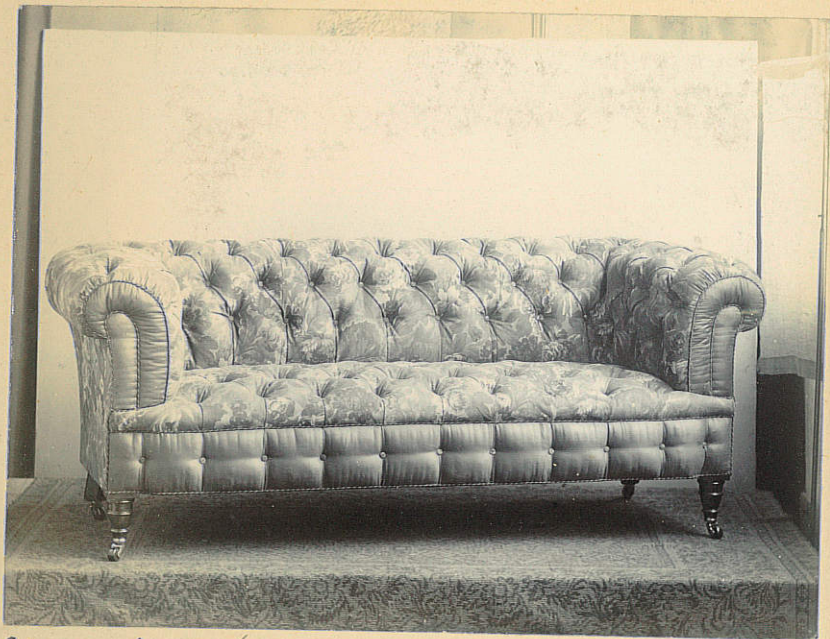
Card leaves cut to fit this Album may be had from any Stationer by quoting the reference number S311.

LONDON.

W. J. & S. *Acadde*



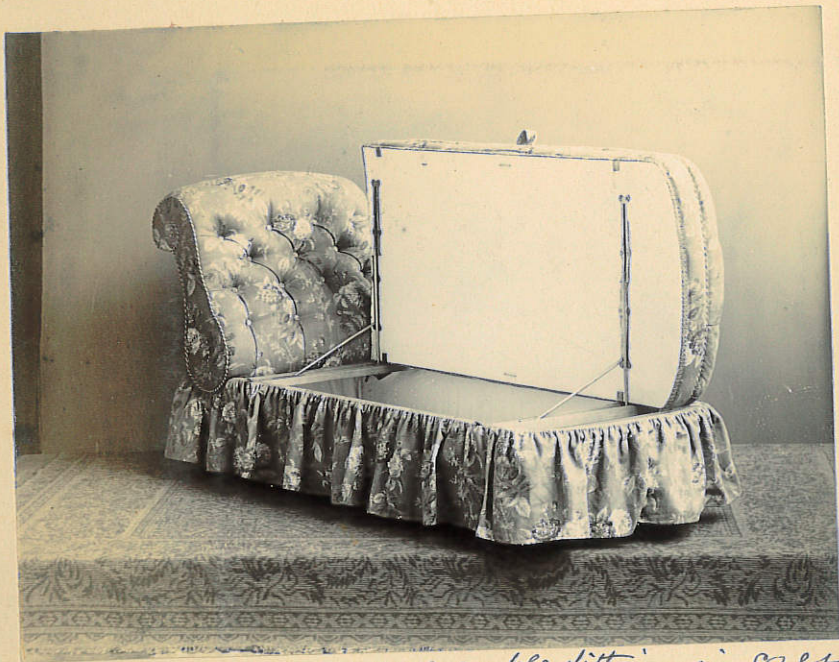
No 129 58/- in cretonne



Chesterfield turned legs in Cret. W/KH/1



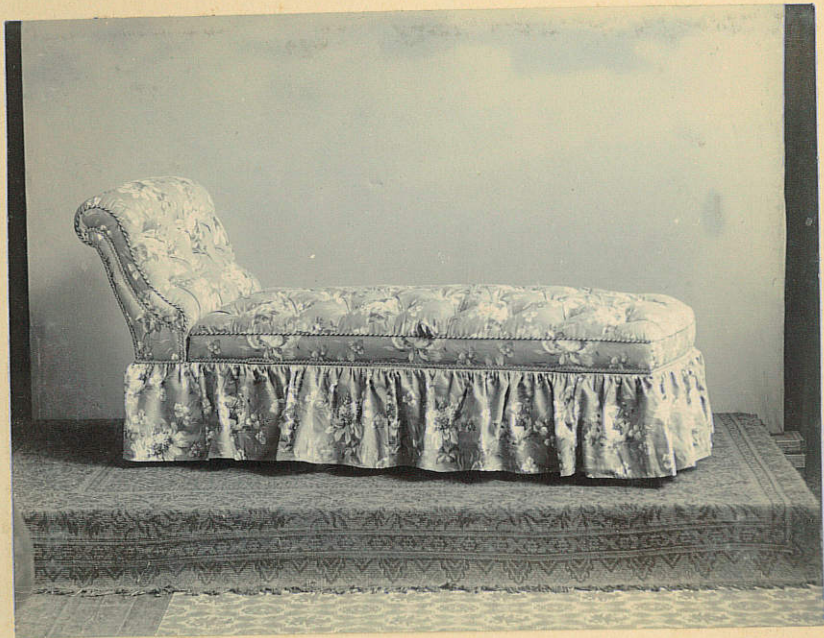
Canterbury Settee in Yapestry J. Kl. H



No 7. Amble.. patent reversible fittings in ore
S/KH/-



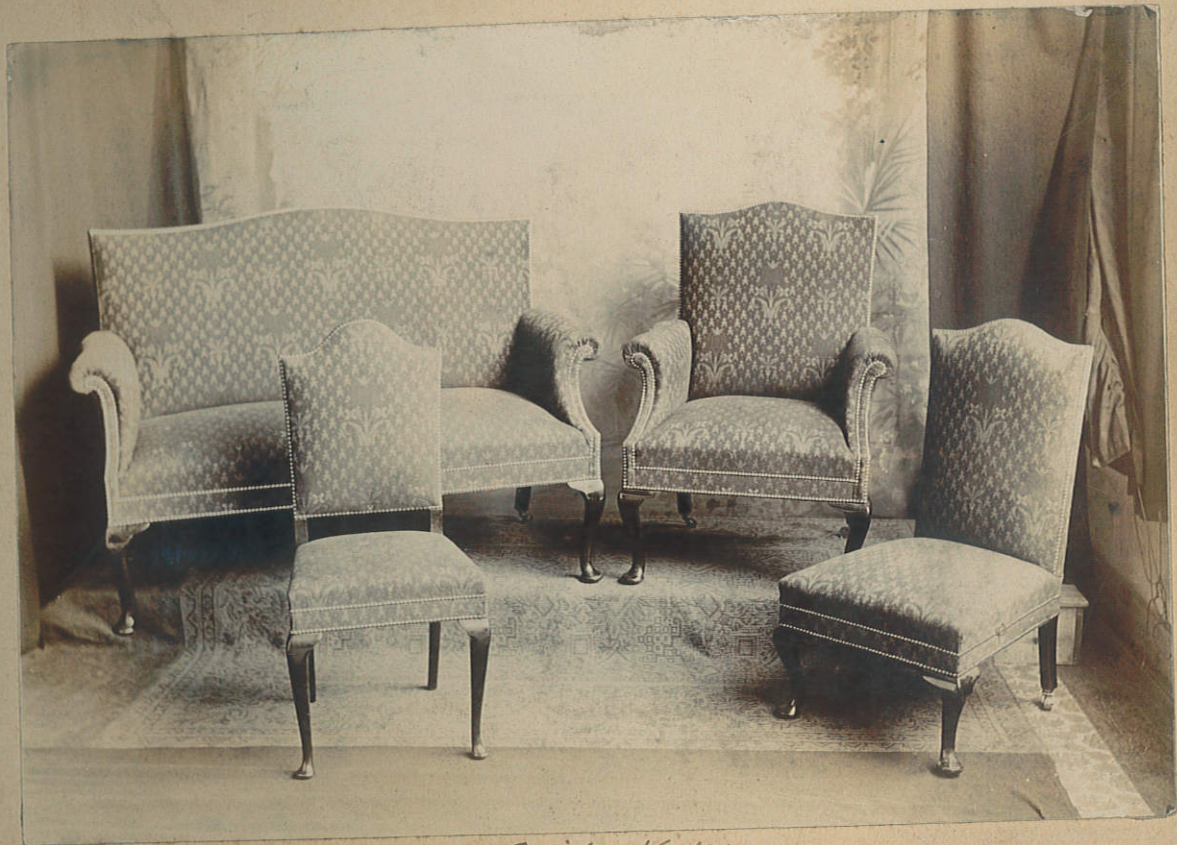
Small Adj. Lounge in cret. 08/10



Berkley Oct 4th 1891



New No. 5 in Cret. 10p/-



7 piece Suite No 54



Empire Suite. 7 pieces
Wool mounts.
Green Silk. @ 1/5 per yard.

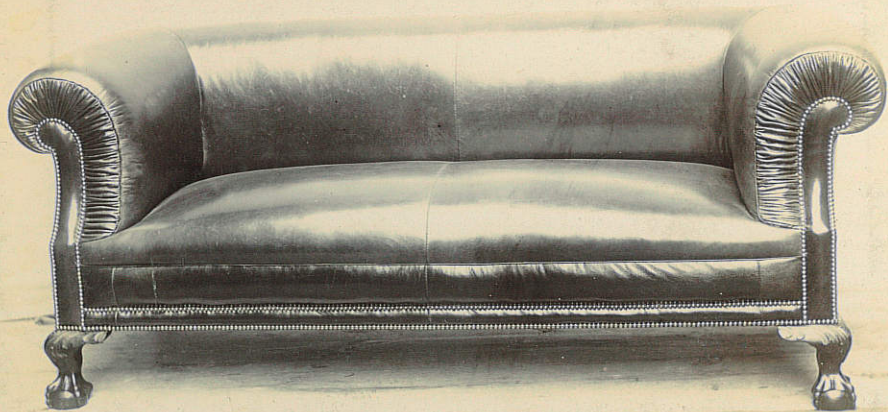
J. H. H. H.



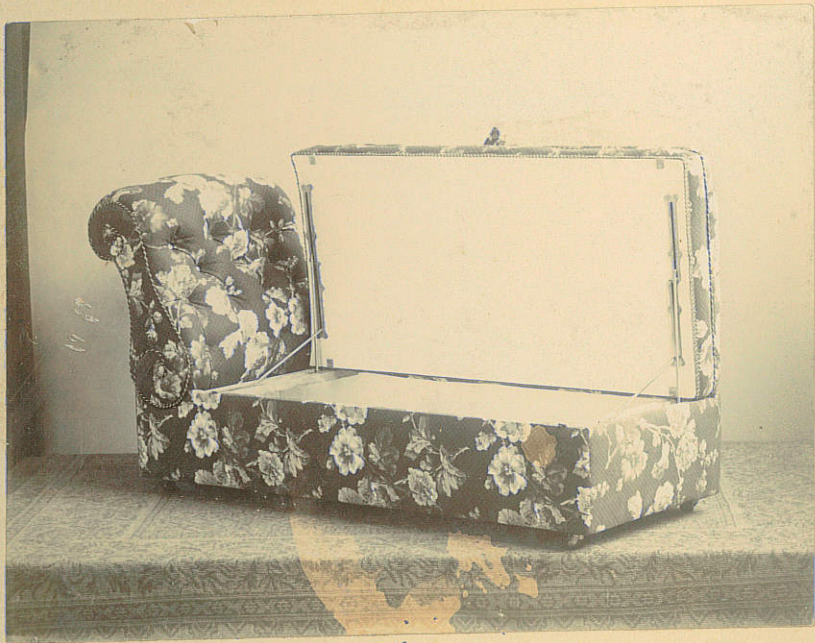
3 pieces w/KH/Seetea No 112 in Striped linen plush -
 S/KH/ - Gents " 113
 S/KH/ - Ladies " 114

S/S





Chesterfield on carved legs in yucca. Kd/KH/-



No. 6. new fittings - P.D./-



No 125. Tapestry Oil-



28/-



28/-



NO 45A new