



Howard Chair (PK 1045). Three-seater Settee (PK-1046).

The Howard Suite

Our most luxurious suite, shown here in Nayland Fawn. A full-size, deeply buttoned back, traditional design that provides a touch of elegance for any home.

Available with ruche and fringe in a limited selection of fabrics.



Left: the High back Rocker (PK 1019), centre: the Low back Settee (PK 1018), top right: the Low back Chair (PK 1017) and right foreground the High back Chair (PK 1016).

The Florian Group

This classic ladder-back suite is a fine example of the chairmaker's art. Modelled on an 18th century design it is available in a dozen wood finishes and around 200 fabrics, here it is shown in Walmer Blue.



The Frith Wing Chair (PK 750). Armchair (PK 749). Settee (PK 1014).

The Froxfield Group

A compact suite consisting of an armchair and a matching two-seater settee, shown in Savona Blue Mint.

The Frith Chair is part of the Froxfield Group. This delightful high back winged chair is also shown in Savona Blue Mint.



Penshurst Chair (PK 720).Hawkhurst Settee (PK 745).

The Penshurst and Hawkhurst Settee

Superb comfort and traditional design combine happily in our famous Penshurst chair and the two-seater Hawkhurst settee pictured here in Draycott Rose Beige. The inset picture shows the Penshurst chair in Woodstock Rose.





The Orleans Rocker and Chair

These elegant chairs, framed in solid mahogany, are made to the highest possible standards. The rocker and the chair are shown in Walmer Rust, and are available in natural or dark mahogany finish.

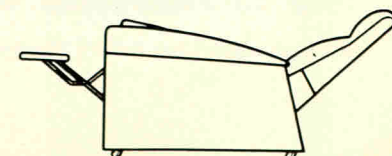
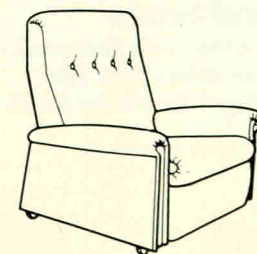
Rocker (PK 1039). Chair (PK 1038).



The Nimrod Recliner

Seen above in the half reclined position, the Nimrod offers superb comfort, and exceptional value. The covering is Walpole Mink. The illustrations show the Nimrod closed and fully reclined.

The Nimrod Recliner (N116).





The Ambassador Chair and Settee

Shown here in Draycott Almond Green, with Afrormosia base, the Ambassador swivel/rocker chair utilises our unique 'Parker Glide' action and matches the elegant three-seater settee.

The Ambassador Chair (N110). Three-seater Settee (N111).



The Highworth

Seen here in Craven Fawn, the Highworth is specifically designed for those who prefer a high seated chair. The arms are designed to provide extra stability when raising or lowering oneself into the chair.

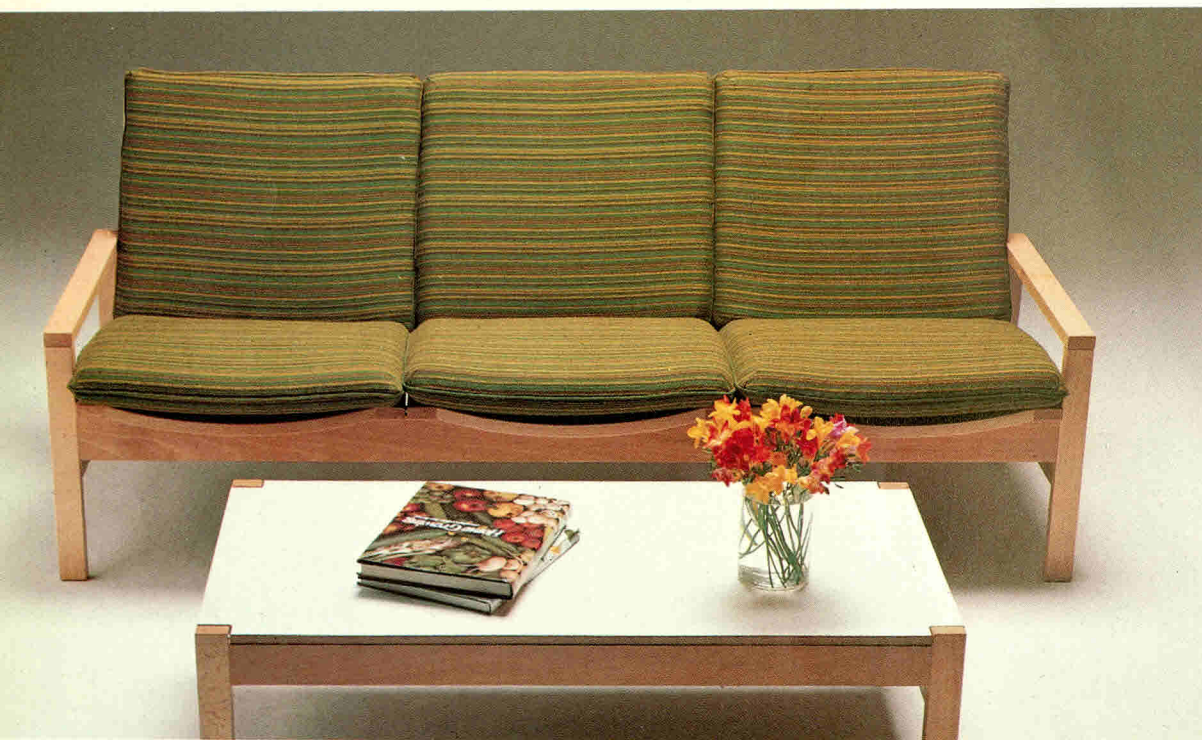
The Highworth is available with and without wings, and can also be supplied with padded arms.

Back: the Highwing (PK 929). Foreground: Highworth (PK 928).

The Compton Chair (N 10)
and Short Table (N 21).



The Compton Settee (N 14)
and Long Table (N 23).



The Compton Group

A modern settee and chair with a strong beech frame and foam cushions on rubber webbing. Both high and low back chairs are available with or without arms. Tables are available in two lengths with black, white or grey heat resistant surfaces. The short table can be ordered as a reversible topped stool with a foam cushion.

The group is shown here in Sutton Green Stripe.

The Compton High Back Chair (N12) High Conway (N13) Stool Table (N22) and Short Table (N21).



The High Evesham Chair (N 104) and Table (N 107).



The Evesham Chair (N 102) three Enstone Chairs (N 103), and Long Evesham Table (N 108)



The Evesham Group

An infinitely adaptable system that includes a choice of three lounge chairs: two desk dining chairs, three occasional tables, and the Evesham dining table.

Pictured here in Sutton Red.

The Wootton Dining Chair with arms (N 105), the Weston Dining Chair (N 106) and the Evesham Dining Table (N 115).





PK 1023



PK 991



PK 992



PK 1009



PK 988



N 78



PK 997

Wooden Arm and High Seated Chairs

To the left is the two-seater Ashby settee and above (centre) is the matching Ashby Chair.

On either side of the Ashby Chair are the Castel and Cornwell Chairs, which together with the Highworth (shown on Page 23) provide particularly good head and lumbar support. These three models are specially designed for the elderly and convalescent and are available in various options e.g. with wings or padded arms.

The Cornwell is also shown with a removable dining tray which is also available for the Highworth, Highwing and Castel.

All the chairs shown here can be ordered in a variety of coverings and 12 different wood finishes.

On these and most other models the seat height can be ordered to suit individual requirements, please ask your retailer for details.

High seated versions of the PK 988, PK 1023 and PK 991, although not illustrated, are also available. For details, see specification sheet — models PK 1024, PK 1025 and PK 1026.