



PARKER-KNOLL



Book of Comfort 1964/65





S. 40 15 -
P. 46 - -
V. 55 - -

PK 938 'Malton'

A full-sized easy chair. The moulded plastic shell base for this model has allowed a pleasant sculptured feeling in the design.





A	29.15-
S	35.15-
P	39.10-
V	46.10-

PK 945 'Andante' (without arms)
 PK 947 'Adagio' (with arms)

PK 720 'Penshurst'

CONTENTS

- Page 2
Introduction
- Pages 1-23
Illustrations of models
- Pages 24-25
The Parker Collection
- Pages 26-27
Dimensional drawings
- Pages 28-29
Prices
- Page 30
Addresses
- Page 31
After-sales service
- Pages 32-33
Parker-Knoll Textiles
and Wood Finishes

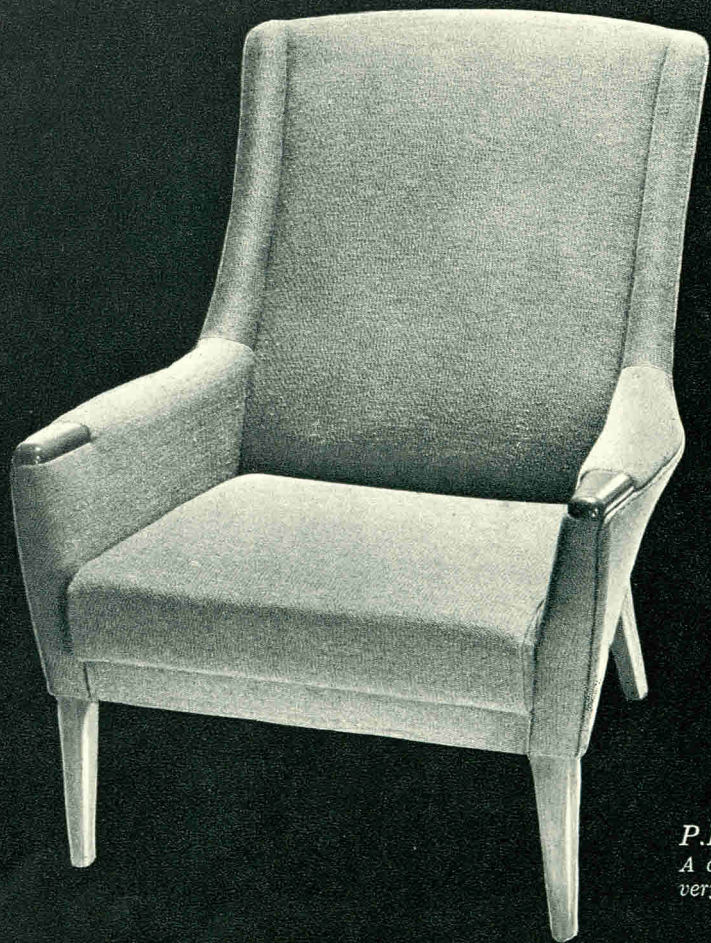
COMFORT AT 'A' LEVEL

Many and varied are the examinations which Parker-Knoll chairs and settees must pass with distinction before they are allowed out into the world. Should they fail in a single subject by even a hair's breadth, their graduation is postponed. Thus, every model that you meet has the highest qualifications for its job—to give you comfort with good design and perfect workmanship.

On the following pages you will find Parker-Knolls to suit every room, every taste and every budget. Some models are of the old school; some of the new. All bear the unmistakeable stamp of Parker-Knoll quality.

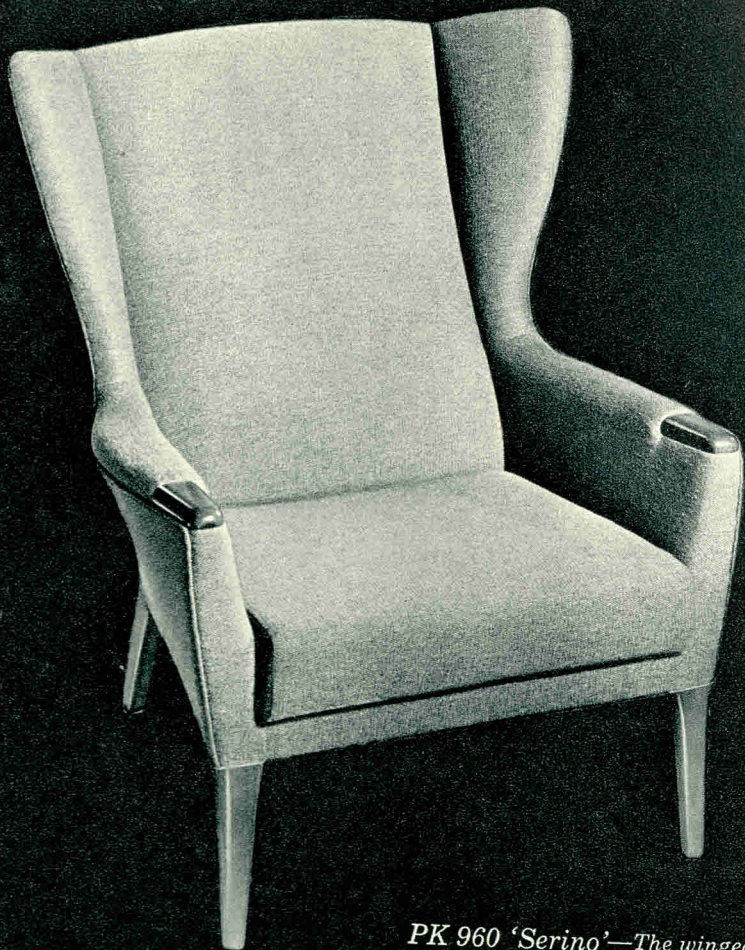
Wood finishes can be coloured to your precise requirements and there is a wide choice of coverings.

You are sure to find a good attendance of Parker-Knoll models at your local furnisher's, and the full range can always be seen at any of our showrooms. These are listed at the end of the book.

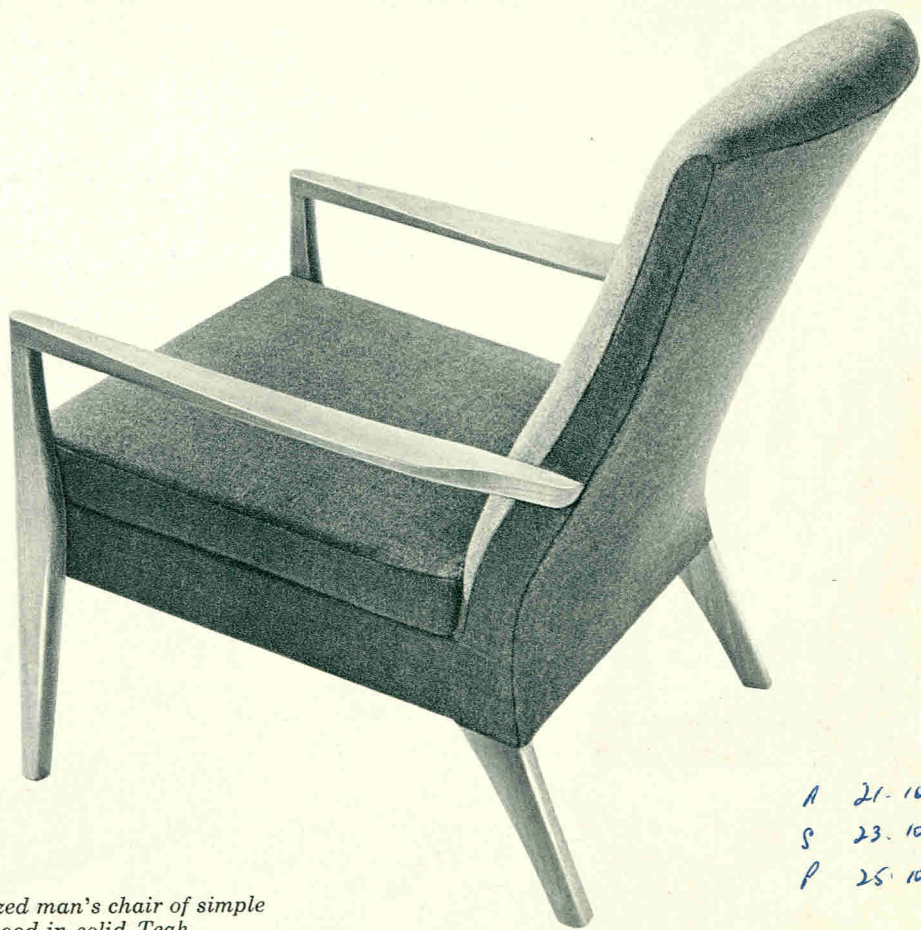


P.K. 961 'Siena'

*A compact, comfortable model and
very reasonably priced.*



PK 960 'Serino'—The winged version of the PK 961 Siena.



PK 975 'Canto'—A generous-sized man's chair of simple form. Show-wood in solid Teak.

A 21.10.-
S 23.10.-
P 25.10.-



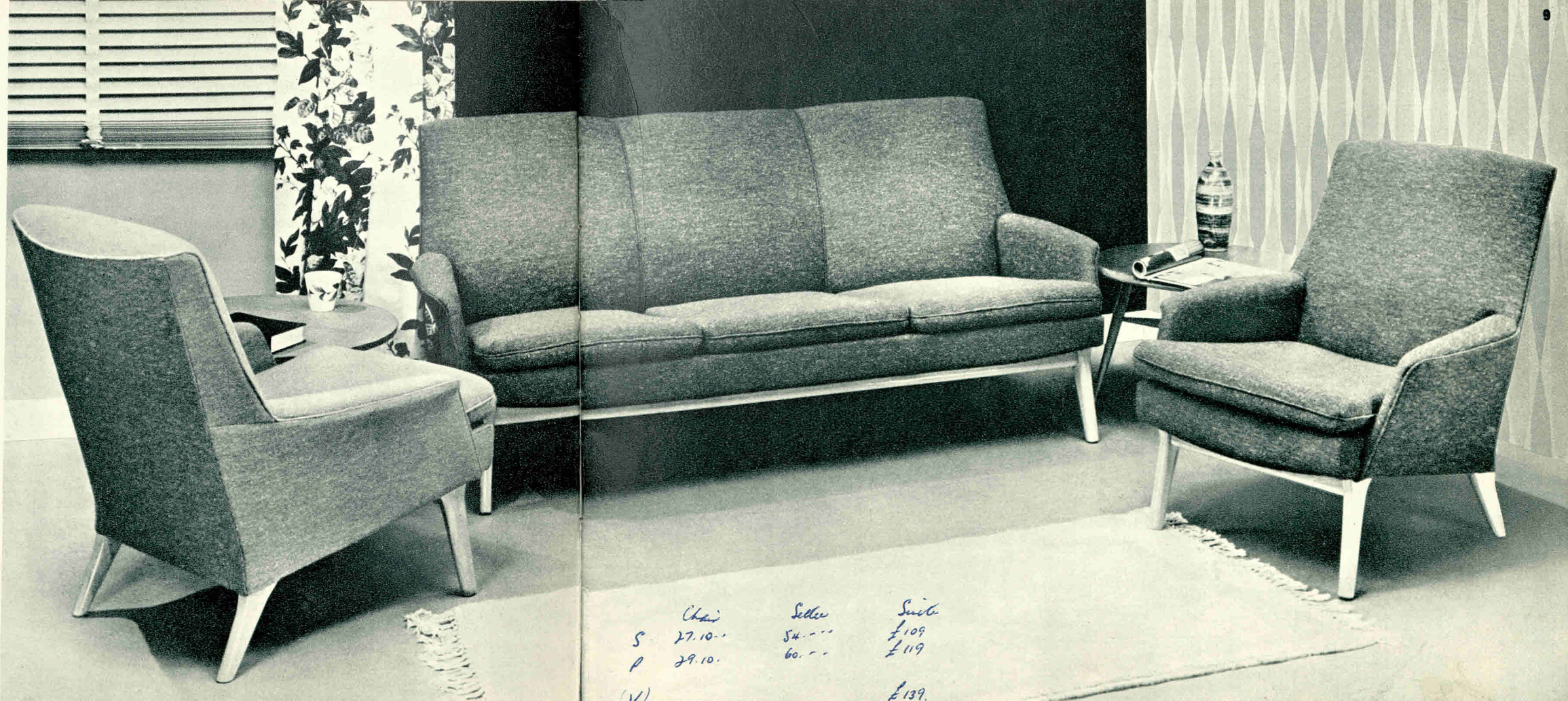


A 17.17 -
 S 19.19 -
 P 22. - -

◀ PK 954 'Ravenna' (low back)
 PK 955 'Fabriano' (high back) ▶

These two models make a
 most attractive combination,
 reflecting contemporary comfort
 at its best. Important design
 features include double-frame
 construction for extra strength
 and particularly elegant arms.

A 18.18 -
 S 21. - -
 P 23. - -

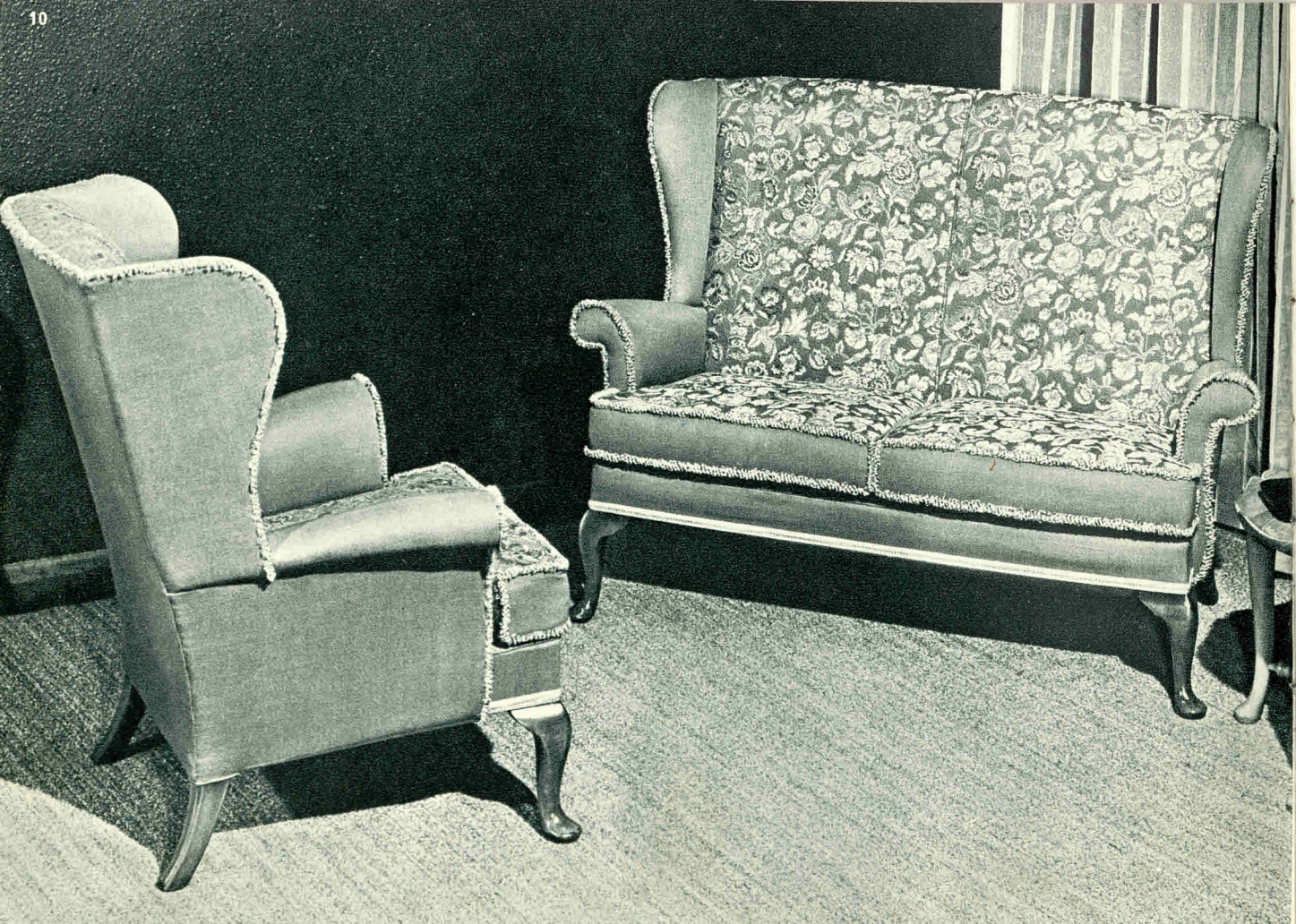


'Gavotte' Suite

Settee PK 935 Chair PK 936

*Full-size, fully upholstered comfort with sprung edge.
Very compact and mobile, it is raised off the floor to
give ample clearance for your sweeper.*

	Chair	Settee	Suite
S	27.10.-	54.-	£109
P	29.10.-	60.-	£119
(V)			£139



PK 720 'Penshurst' The ever-popular 'Penshurst' in one of the standard coverings.



	<i>Chair</i>	<i>Settee</i>	<i>Suite</i>
<i>A</i>	29.15.-	57.-	116.10.-
<i>S</i>	35.15.-	64.10.-	136.-
<i>P</i>	39.10.-	71.10.-	150.10.-
<i>V</i>	46.10.-	81.10.-	174.10.-



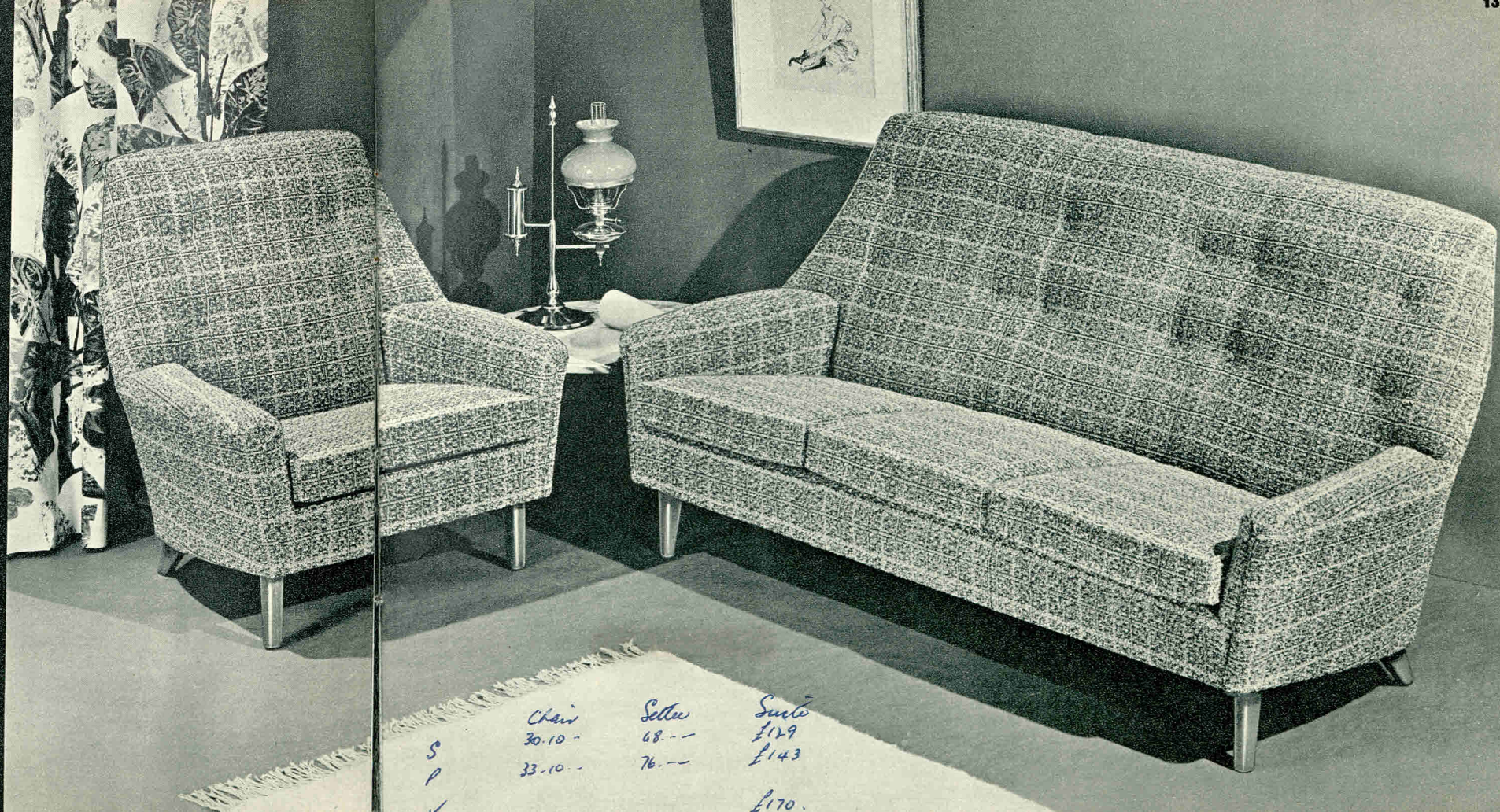
PK 720 'Penshurst'
Vanbrugh Panel. A chair that
combines the beauty of a strong
traditional influence with
contemporary comfort.

PK 745 'Hawkhurst' Settee
Vanbrugh Panel. Settee for two,
with a fully sprung front edge.

Giovanni Suite

Chair: P.K. 970 Settee: P.K. 971

*A splendid example of compact, modern comfort.
The settee has a fully sprung front edge.*



PK.976 Bosworth Chair and PK.977 Bosworth Stool

*The design reflects the mid 18th Century but the comfort is strictly of today. ▶
As an optional partner to the chair, there is a matching stool which makes
an excellent extra seat or can turn the 'Bosworth' into a chaise-longue.*



PK 749 'Froxfield'

◀ *Outward curving arms are an attractive
feature of this model.*



	<i>Chair</i>	<i>Stool</i>
S	39.15.-	16.10.-
P	44.15.-	18.18.-
V	53.15.-	22.10.-

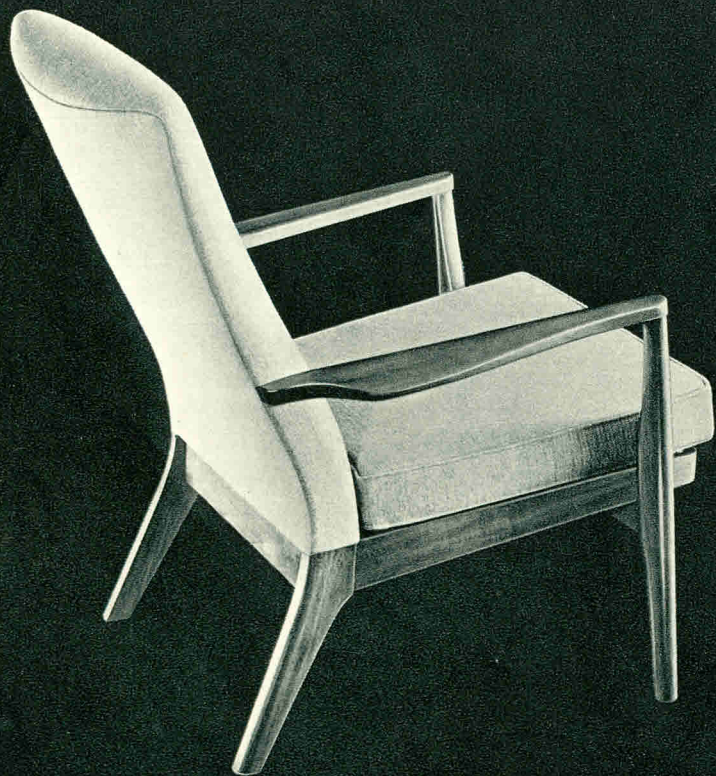


PK 757 'Wingfield'
Wing chair with good head and back support.



PK 945 'Andante' (without arms)
 PK 947 'Adagio' (with arms)

	945.	947
A	15.15.	21.15.-
S	16.19.6.	24.15.-
P	18.18.-	27.15.-

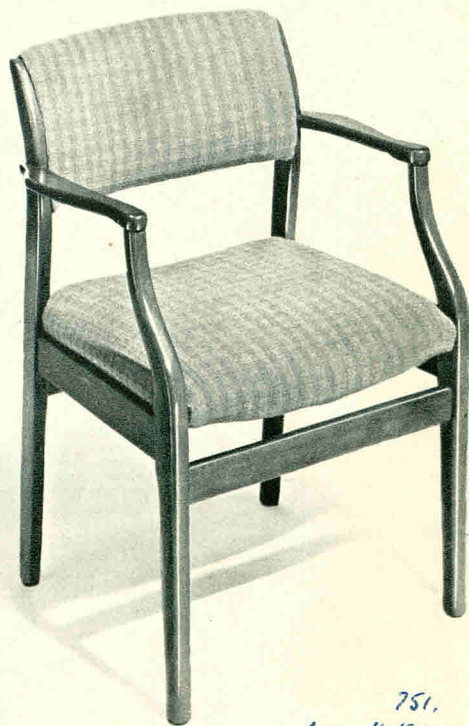


◀ *P.K. 973 'Ringwood'*

*Fireside comfort at a very reasonable price.
Note the graceful shaping of the arms.*

P.K. 974 'Rockwood'

A rocking chair version of the 'Ringwood'. ▶

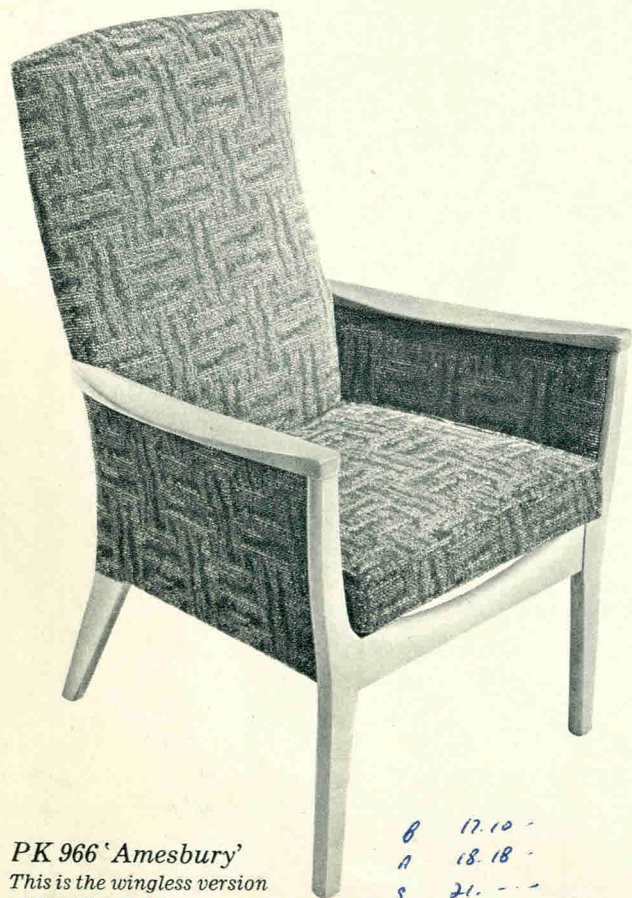


PK 751 'Roslin'

A pleasantly designed dining chair. Also available without arms: PK752 'Oban'.

	751.
A	11. 15"
S	12. 12"
P.	13. 10"

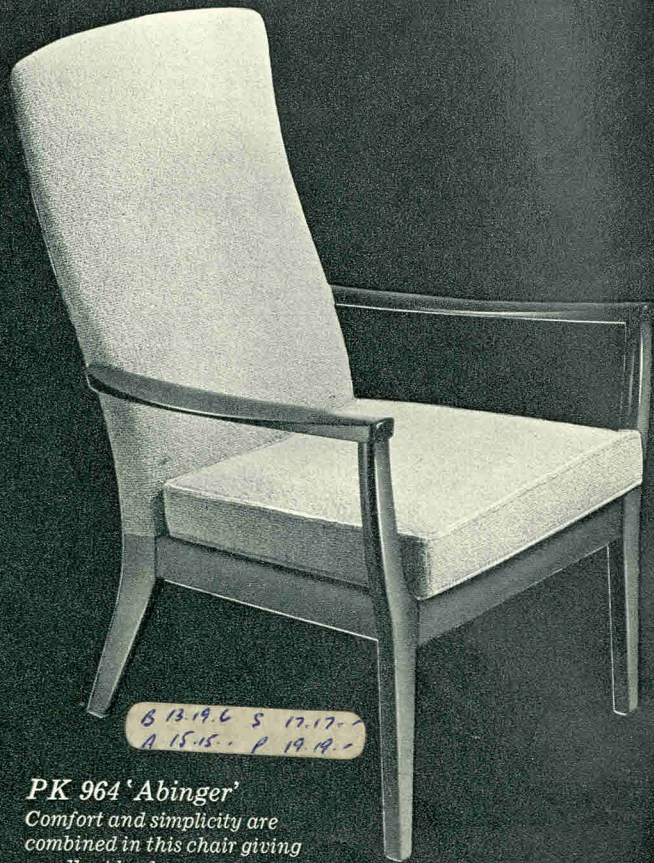
	752
A	11. 5"
S	12. 2"
P.	13. --"



PK 966 'Amesbury'

*This is the wingless version
of the 'Ainsdale'.*

B 17.10 -
A 18.18 -
S 21. - -
P 23. - -



PK 964 'Abinger'

*Comfort and simplicity are
combined in this chair giving
excellent back support.*

Also available with arm pads as illustrated on the right. ▶

B 13.19.6 S 17.17 -
A 15.15. P 19.19 -



B 15.96 S 19.15-
A 17.15- P 21.15-

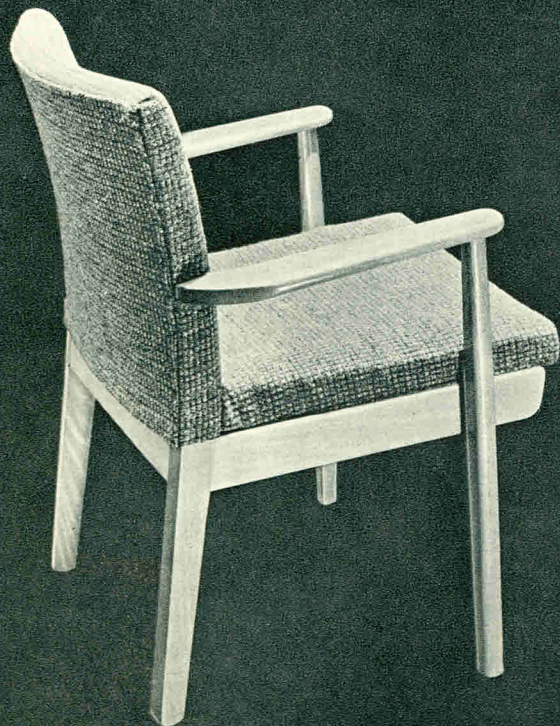
PK.965 'Abinger'



B 19.19-
A 21.10-
S 24.10-
P 27.10-

PK 967 'Ainsdale'

The traditional comfort of a wing chair in a contemporary design.



PK 733 'Langford'

A sturdy occasional chair—ideal for hotels, clubs and restaurants.

PK 928 'Highworth'

This considerate armchair is specially designed to appeal to seniors. It offers good head and lumbar support enabling them to sit upright in perfect comfort and to get up without the aid of a helping hand. Seat height : 20 $\frac{1}{4}$ ".

Also available with arm pads PK 958



A 18.18 -
S 21. ---
P 23. ---



PK 929 'Highwing'

A version of PK 928 'Highworth' with upholstered wings for added comfort.

Also available with arm pads PK 959

A 27.-.-
S 25.-10.-
P 27.-18.6



PK 747 'Newlyn'

A chair of classic simplicity that allows complete freedom of movement.

THE PARKER COLLECTION

Frederick Parker (1845-1927), founder of the firm, believed that the study of "Old Masters" was the only sound basis for all design and craftsmanship.

Accordingly he started to collect types of classical furniture, so that their intimate study might inspire the creation of good contemporary furniture.

In this enterprise he was assisted by his sons, later to become Directors of Parker-Knoll.

This collection begun in the 'nineties now numbers several hundreds of chairs, settees and pieces of carving, besides thousands of plaster casts, needlework and fragments of tapestry—all original examples.

Part of the collection (it is too large to display in its entirety) is on view at Temple End. Designers, craftsmen, salesmen, in fact all who are interested in historical furniture, are invited to visit it any day during office hours, Saturday excepted.

1 About 1765: Very rare mahogany and yew Windsor armchair of fine proportions. The curved centre splat, seat, and legs being of mahogany, the arms and spindles of yew.

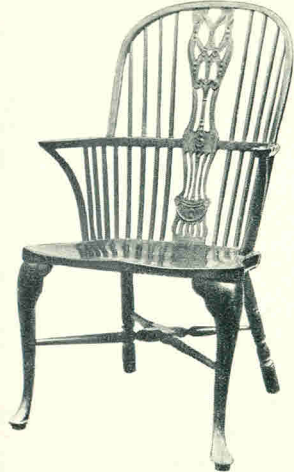
2 About 1770: Finely proportioned mahogany Hepplewhite armchair, the carving and shape showing the high degree of skill of the craftsman who made it.

3 About 1725: An unusual mahogany George I side chair with gilded ornamentation on the legs. Notice the concave shaping at the back made to receive a man's tie wig.

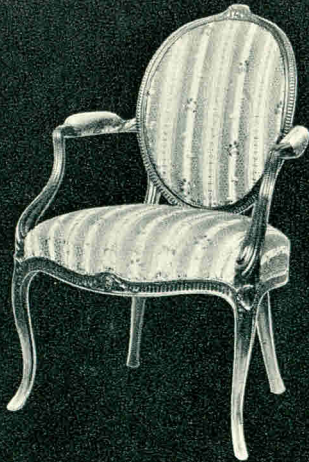
4 About 1790: Fine example of a painted Sheraton side chair with circular seat.

5 About 1690: Interesting William and Mary walnut 'X' frame armchair, cane back.

6 About 1720: Very fine Mahogany George I barber's chair, the splay terminating in a periwinkle scroll and with bold arms.



1



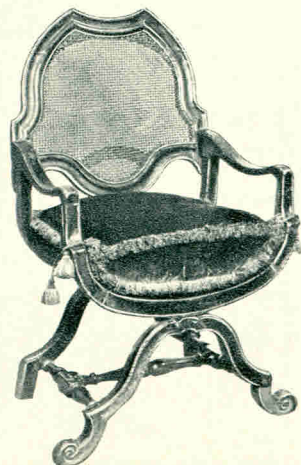
2



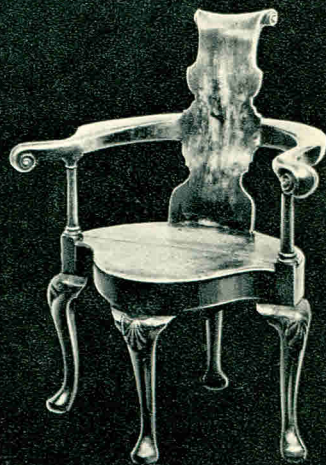
3



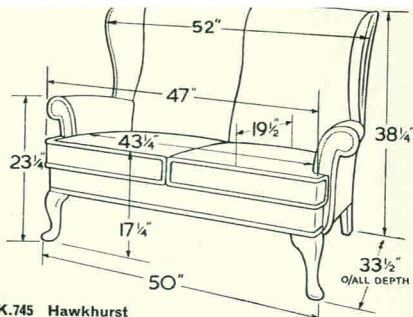
4



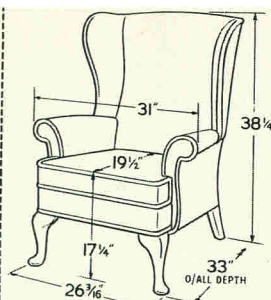
5



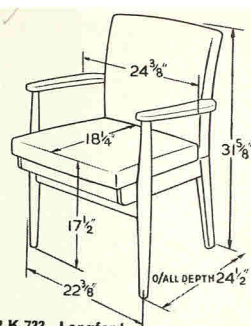
6



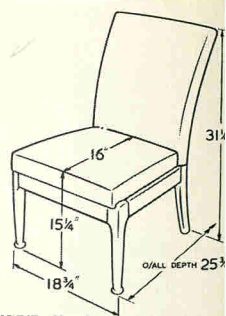
P.K.745 Hawkhurst



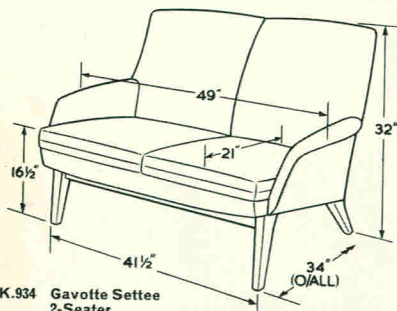
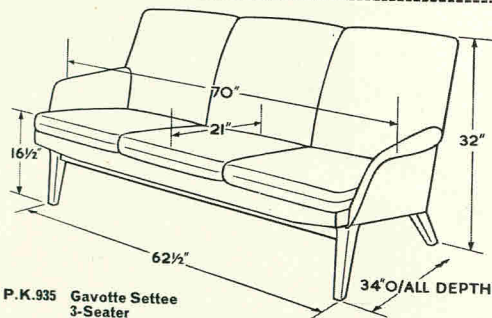
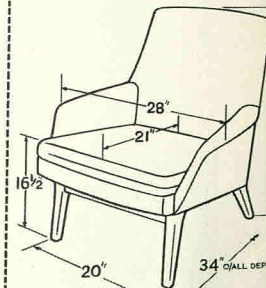
P.K.720 Penshurst



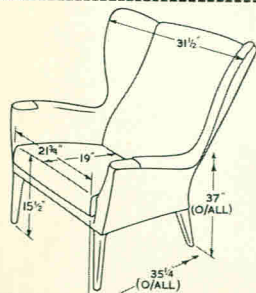
P.K.733 Langford



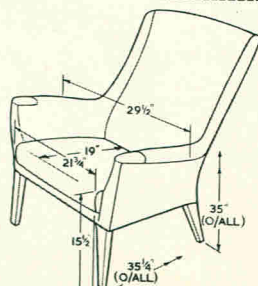
P.K.747 Newlyn

P.K.934 Gavotte Settee
2-SeaterP.K.935 Gavotte Settee
3-Seater

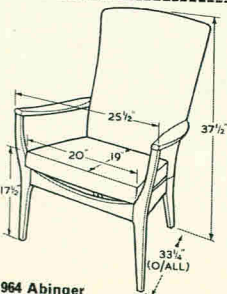
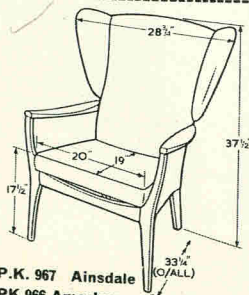
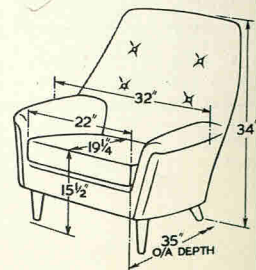
P.K.936 Gavotte Chair



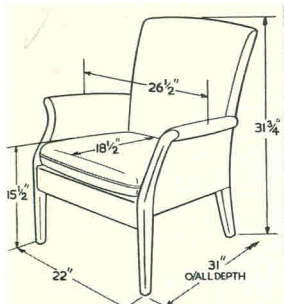
PK 960 Serino



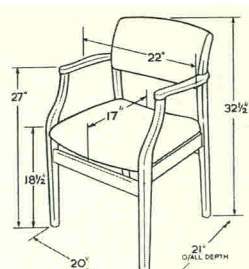
PK 961 Siena

PK 964 Abinger
PK 965 Abinger (with padded arms)P.K. 967 Ainsdale
PK.966 Amesbury
(without wings)

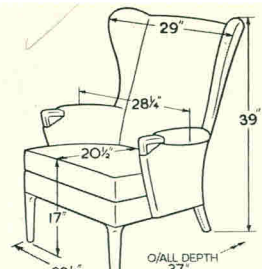
PK 970 Giovanni Chair



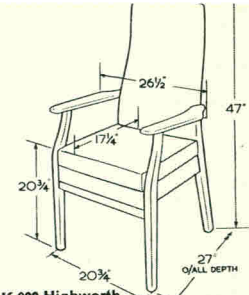
P.K.749 Froxfield



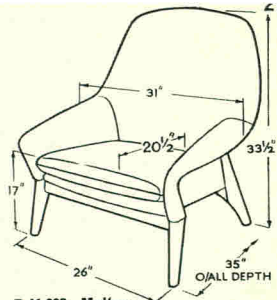
P.K.751 Roslin
P.K.752 Oban (without arms)



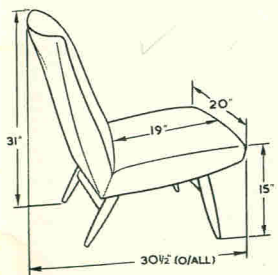
P.K.757 Wingfield



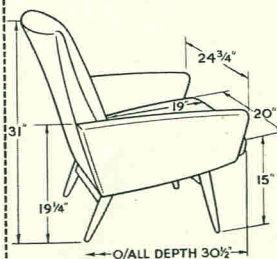
P.K.928 Highworth
P.K.929 Highwing (with wings)



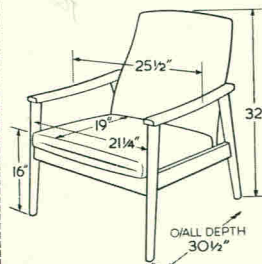
P.K.938 Malton



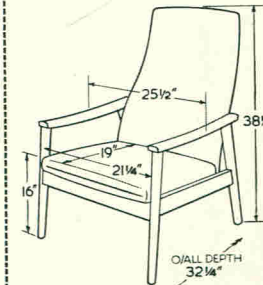
P.K.945 Andante



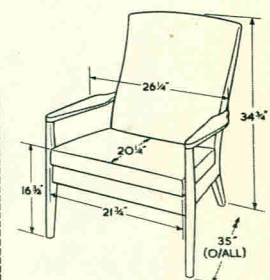
P.K.947 Adagio



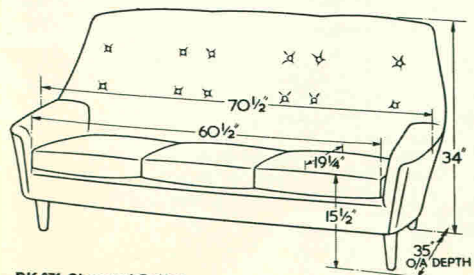
PK 954 Ravenna



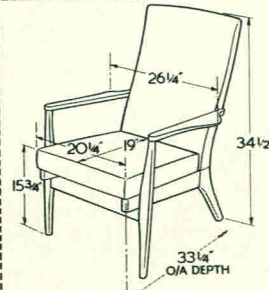
PK 955 Fabriano



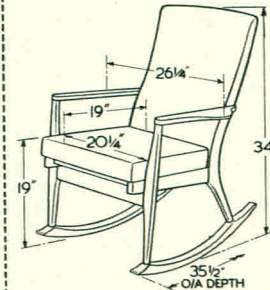
PK 975 Canto



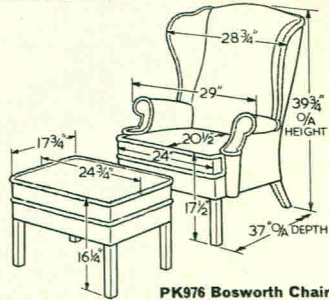
PK 971 Giovanni Settee
3-Seater



PK 973 Ringwood



PK 974 Rockwood



PK976 Besworth Chair
PK977 Besworth Stool

Page No.	Model	Name	Cover "B"	Cover "A"	Cover "S"	Cover "P"	Cover "V"	Yardage Own Cover		Own Cover Price	Finishes
I.F.C.			£ s. d.	£ s. d.	£ s. d.	£ s. d.	£ s. d.	31"	50"	£ s. d.	
11	P.K.720	Penshurst	★†	29 15 0	35 15 0	39 10 0	46 10 0	8	4½	29 5 0	All models, with the exceptions noted below are available in a choice of the following standard finishes:— Natural Beech Mahogany Light Walnut Walnut Dark Rosewood Light Mahogany Teak Ebonised finish
22	P.K.733	Langford	★	11 15 0	12 19 6	13 19 6	15 19 6	2½	1½	11 12 6	
10	P.K.745	Hawkhurst	★†	57 0 0	64 10 0	71 10 0	81 10 0	12	6½	56 0 0	
23	P.K.747	Newlyn	★	11 15 0	12 19 6	14 14 0	17 17 0	2½	1½	11 10 0	
14	P.K.749	Froxfield	★	21 15 0	24 15 0	27 15 0	33 15 0	5	2¾	21 5 0	
19	P.K.751	Roslin	★	11 15 0	12 12 0	13 10 0	15 10 0	1½	¾	11 10 0	
—	P.K.752	Oban	★	11 5 0	12 2 0	13 0 0	15 0 0	1½	¾	11 0 0	
16	P.K.757	Wingfield	★	29 15 0	35 15 0	39 10 0	46 10 0	7½	4½	29 5 0	
22	P.K.928	Highworth	★	18 18 0	21 0 0	23 0 0	27 0 0	4	2	18 10 0	
23	P.K.929	Highwing	★	23 0 0	25 10 0	27 18 6	32 15 0	5½	2½	22 10 0	
8 & 9	P.K.935/6	Gavotte Suite	†	†	109 0 0	119 0 0	139 0 0	—	—	105 15 0	
—	P.K.934	Gavotte Settee 2-seater	†	†	48 0 0	54 0 0	66 0 0	9½	5	46 15 0	
8 & 9	P.K.935	Gavotte Settee 3-seater	†	†	54 0 0	60 0 0	72 0 0	13	6½	52 5 0	
8 & 9	P.K.936	Gavotte Chair	†	†	27 10 0	29 10 0	33 10 0	5¾	3	26 15 0	
17	P.K.945	Andante	★	15 15 0	16 19 6	18 18 0	22 15 0	2¾	1¾	15 10 0	
17	P.K.947	Adagio	★	21 15 0	24 15 0	27 15 0	33 15 0	4½	2¾	21 5 0	
6	P.K.954	Ravenna	★	17 17 0	19 19 0	22 0 0	26 0 0	3½	1¾	17 10 0	
7	P.K.955	Fabiano	★	18 18 0	21 0 0	23 0 0	27 0 0	3¾	2	18 10 0	
—	P.K.958	P.K.928 Highworth with arm pads	★	21 0 0	23 0 0	25 0 0	29 0 0	4¾	2½	20 15 0	
—	P.K.959	P.K.929 Highwing with arm pads	★	25 0 0	27 10 0	29 10 0	33 10 0	6	3	24 10 0	

All models, with the exceptions noted below are available in a choice of the following standard finishes:—

Natural Beech
Mahogany
Light Walnut
Walnut
Dark Rosewood
Light Mahogany
Teak
Ebonised finish

P.K.720 & P.K.745

The Penshurst wing chair and matching Hawkhurst settee are normally supplied in a special antique Walnut finish, but all the above finishes are available if required.

P.K.975

Show-wood for the Canto chair is in solid teak.

Page No.	Model	Name	Cover "B"	Cover "A"	Cover "S"	Cover "P"	Cover "V"	Yardage Own Cover 31" 50"		Own Cover Price	Finishes
I.F.C.			£ s. d.	£ s. d.	£ s. d.	£ s. d.	£ s. d.			£ s. d.	
4	P.K.960	Serino	23 15 0	25 10 0	28 10 0	31 10 0	37 10 0	6½	3½	23 5 0	All models, with the exceptions noted below are available in a choice of the following standard finishes:— Natural Beech Mahogany Light Walnut Walnut Dark Rosewood Light Mahogany Teak Ebonised finish
3	P.K.961	Siena	23 15 0	25 10 0	28 10 0	31 10 0	37 10 0	6½	3½	23 5 0	
20	P.K.964	Abinger	13 19 6	15 15 0	17 17 0	19 19 0	24 0 0	3¾	2	13 15 0	
21	P.K.965	Abinger with arm pads	15 19 6	17 15 0	19 15 0	21 15 0	25 15 0	4½	2½	15 12 6	
20	P.K.966	Amesbury	17 10 0	18 18 0	21 0 0	23 0 0	27 0 0	5½	2¾	17 0 0	
21	P.K.967	Ainsdale	19 19 0	21 10 0	24 10 0	27 10 0	33 10 0	6¾	3¾	19 7 6	
12 & 13	P.K.970/1	Giovanni Suite	†	†	129 0 0	143 0 0	170 0 0	—	—	112 10 0	
12	P.K.970	Giovanni Chair	†	†	30 10 0	33 10 0	39 10 0	—	3½	26 15 0	
13	P.K.971	Giovanni Settee	†	†	68 0 0	76 0 0	91 0 0	—	8½	59 0 0	
18	P.K.973	Ringwood	12 12 0	14 14 0	16 16 0	18 18 0	23 0 0	3½	1¾	12 7 6	
19	P.K.974	Rockwood	14 14 0	16 16 0	18 18 0	20 18 6	25 0 0	3¾	1¾	14 10 0	The Penshurst wing chair and matching Hawkhurst settee are normally supplied in a special antique Walnut finish, but all the above finishes are available if required.
5	P.K.975	Canto	★	21 10 0	23 10 0	25 10 0	29 10 0	5½	2¾	21 2 6	
15	P.K.976	Bosworth Chair	†	†	39 15 0	44 15 0	53 15 0	8½	4½	33 5 0	
15	P.K.977	Bosworth Stool	†	†	16 16 0	18 18 0	22 10 0	2¾	1½	15 0 0	

LIMITED EDITION MODEL

1	P.K.938	Malton	Teak, English Walnut or Rosewood. Only plain covers are suitable for this design.			40 15 0	46 0 0	55 0 0	—	4	40 5 0
---	---------	--------	-----------------------------------------------------------------------------------	--	--	---------	--------	--------	---	---	--------

IMPORTANT—add proportionate quantity if your material is less than 50" or 31" wide.
There will be an extra charge for using own hide or own leather cloth.

★ "B" covers are not normally supplied on these models, but if specifically requested they can be supplied at the "A" cover price.
† "A" and "B" covers are not normally supplied on these models, but if specifically requested they can be supplied at the "S" cover price.
Vanbrugh panel with ruche available on P.K.720 and P.K.745 at the "V" quality prices.

Our programme of continuous development makes it necessary for us to reserve the right to revise, without notice, price and detail specifications

1st August 1964.

Sales Office

The Courtyard, Frogmoor, High Wycombe, Bucks.
Telephone: High Wycombe 4000

Showrooms

LONDON: 19/20 Berners Street, W1

MANCHESTER: 33 King Street

BRISTOL: 35 Park Street

BIRMINGHAM: 43 Temple Street

HIGH WYCOMBE: The Courtyard, Frogmoor

Subsidiary Companies

PARKER-KNOLL TEXTILES LTD.

Sales Office & Warehouse:

Parkertex House,
West End Road, High Wycombe, Bucks.
Telephone: High Wycombe 2301.

Showrooms

Parkertex House, 28 Berners Street, London, W1
Telephone: Langham 8087

G. P. & J. BAKER LTD.,
Temple End, High Wycombe, Bucks.

Showrooms

Parkertex House, 28 Berners St., London, W1
Telephone: Langham 1827

FREDERICK PARKER & SONS LTD.,
Temple End, High Wycombe, Bucks.

PARKER TEXTILES LTD.,
Temple End, High Wycombe, Bucks.

CORNWELL-NORTON LTD.,
23, Frogmoor, High Wycombe, Bucks.
Telephone: High Wycombe 4634

PARKER-KNOLL FRANCE (S.A.R.L.),
66, Rue Maurice Gunsbourg, Ivry (Seine)
Telephone: Capital Italie 78-79

LICENSEES

AFRICA

West Africa

C.F.C. Furniture Co. (West Africa) Ltd., P.O. Box 282, Ring Road, Accra, GHANA.

C.F.C. Furniture Co. (West Africa) Ltd., P.O. Box 42, Mushin, Lagos, Nigeria.

C.F.C. Furniture Co. (West Africa) Ltd., P.O. Box 501 27 Garrison Street, Freetown,
Sierra Leone, British West Africa.

C.F.C. Furniture Co. (Eastern Nigeria) Ltd., P.O. Box 181, Port Harcourt, Eastern Nigeria.

C.F.C. Furniture Co. (Northern Nigeria) Ltd., P.O. Box 197, Kaduna, Northern Nigeria.

Kenya

Kenya Industrial Corporation, P.O. Box 210, Mombasa.

Rhodesian Federation

Springmaster Corporation, (S.R.) (Pvt) Ltd., Lisburn Road, Workington Industrial Sites,
Salisbury, Southern Rhodesia.

Branch factories at Bulawayo and Ndola, N.R.

Republic of South Africa

Rand Upholsterers (Pty) Limited, P.O. Box 4317, Johannesburg.

ASIA

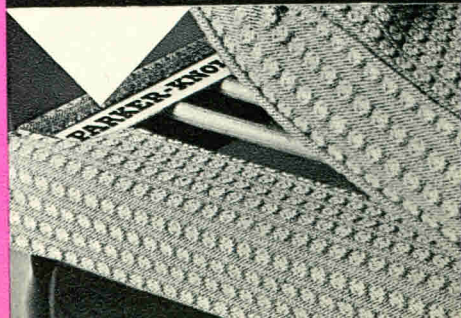
Hong Kong: Lane Crawford & Company, P.O. Box 83, Hong Kong.

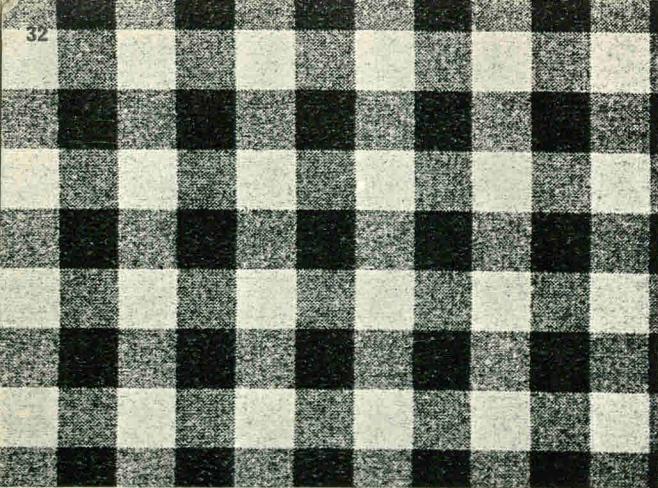
India: Spencer & Co. Limited, Mount Road, Madras.

Malaya: Robinson & Company, Raffles Place, Singapore.

Our interest in Parker-Knoll chairs and settees is never lost when we sell them. We know how attached people get to 'old favourites'. When we are asked if we can rejuvenate or re-cover a Parker-Knoll—no matter how many years of faithful service it has given—the answer is always 'yes', and the result is usually 'as good as new'.

To identify a genuine Parker-Knoll, simply lift the seat cushion and look for the Parker-Knoll name-tape that runs along the frame. This applies to all but a few fixed seat models.

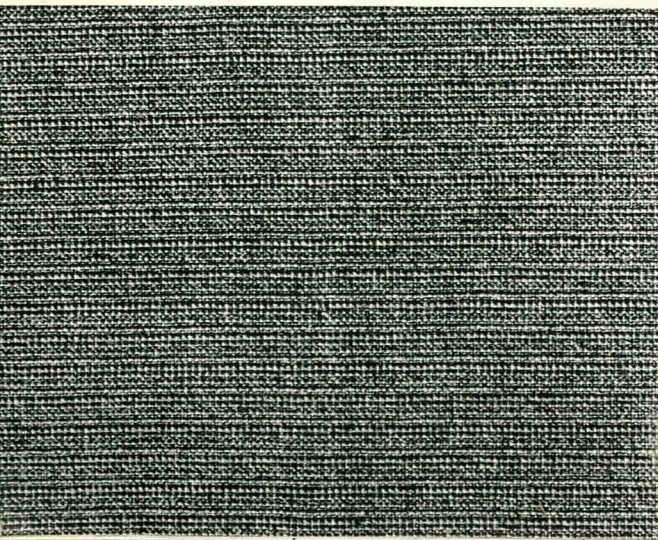




Crossways

Left NORWICH: Design adapted from an early 18th Century French Altar Cloth in our Collection.

Right BODIAM: Design derived from an 18th Century English needlework.



Rhodes

PARKER-KNOLL TEXTILES

For the style of a particular chair, Parker-Knoll create a perfectly matching fabric—sometimes original in design, sometimes inspired by old documents, prints and needleworks in the Parker-Knoll Collection. Did you know that you can also buy additional lengths of these fabrics for curtains, cushions, or covers for the rest of your furniture? You can dress any room in your home with the elegance of P.K. fabrics. They need not be expensive—the range runs from the modestly priced 'B' grade fabrics, through 'A' and 'S' grades, to sumptuous 'P' grade materials. Ask your Parker-Knoll dealer for full details.



*Dark
Rosewood*



Mahogany



Walnut



Teak



*Light
Mahogany*



*Light
Walnut*



*Natural
Beech*

HERE IS THE STANDARD RANGE OF WOOD FINISHES

FPBXC5/7/2



PARKER-KNOLL



Chairs and Settees