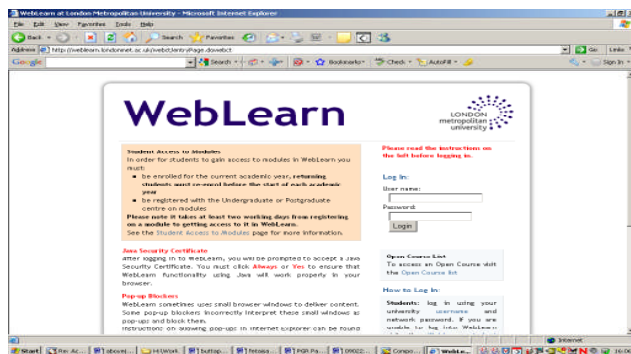


Epigeum

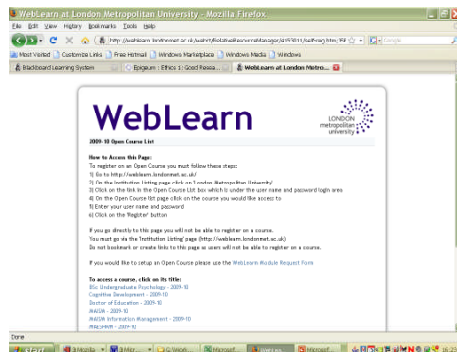
On-line learning resource for staff & students

Ethics 2: Working with Human Subjects

To access the Epigeum on-line courses, log in to the WebLearn site and click on the Open Course List.

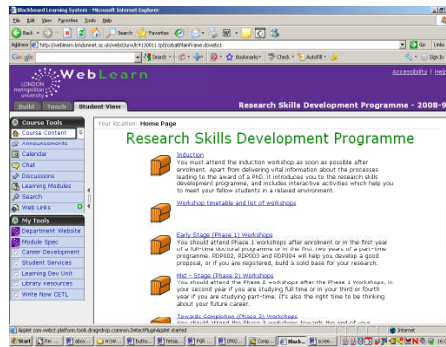


A list of Open Courses will appear, select the course entitled Research Skills Development Programme and log in as a student using your staff username and password.

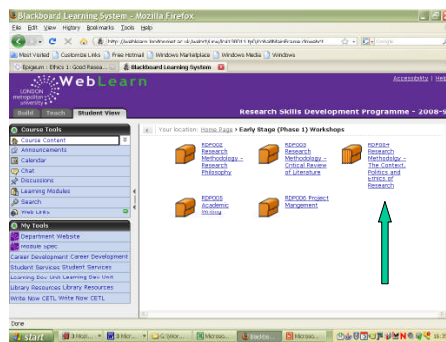


Once you have selected the Research Skills Development Programme, you should see the various components of the programme in this format.

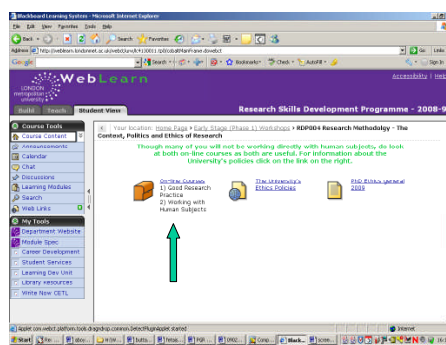
To access the Ethics material you will need to select Early Stage (Phase 1) Workshops.



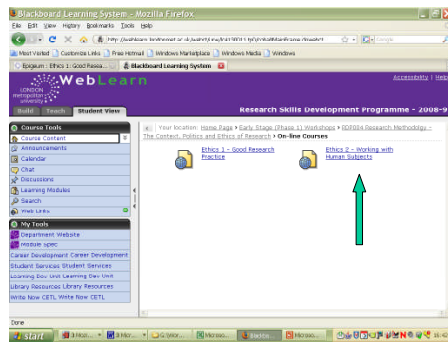
Next, select RDP004



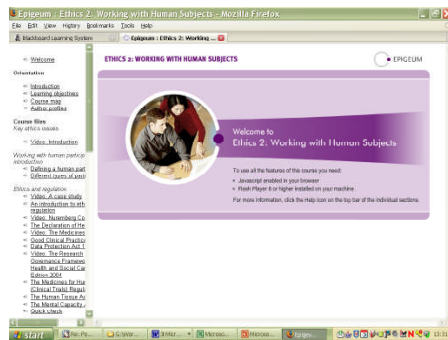
Next, select On-line Courses



Ethics 2 – Working with Human Subjects. You will be asked for your username and password again..



..and you are in!



Course structure

The course is split into the following sections:

- Orientation
 - Introduction
 - Learning objectives
 - Course map
 - Author profiles
- Course files
 - Key ethics issues
 - Working with human participants - introduction
 - Ethics and regulation
 - Informed consent - introduction
 - Informed consent – accessibility of information
 - Informed consent – children
 - Informed consent – adults with learning or communication difficulties
 - Confidentiality
 - Liability and inducement
- Application
 - Practice scenarios
- Closing
 - Course summary
 - Resource bank
- Course quiz

Course files

1. Key ethics issues

This section includes:

A short video providing an insight into key ethics issues.

2. Working with human participants – introduction

This section includes:

Defining a human participant

The three different ways in which a human participant can participate in a research study:

1. Direct/Active Participation
2. Indirect/Passive Participation
3. Covert Research (deception or subterfuge)



3. Ethics and regulation

This section includes:

A short video on the Tuskegee syphilis study.

An introduction to ethics and regulation

A short video on the Nuremberg Code (1947)

Information on the Declaration of Helsinki (1964)

A short video on the Medicines Act (1968) (image 2)

Information on the Good Clinical Practice Act (1996) and its origins

Information on the Data Protection Act (1998)

Image 2



Continued...

A short video on the Research Governance Framework for Health & Social Care – 2nd edition (2004) (image 3)

Information on the Medicines for Human Use (Clinical Trials) Regulations 2004 and their origins.

Information on the Human Tissue Act 2004

Information on the Mental Capacity Act 2005

A quiz to consolidate your learning (image 4)

Image 3



Image 4



4. Informed consent - introduction

This section includes:

Informed consent – three step process (image 5)

Identifying the variance in regulation between medical & social research

Introduction to the concept of dependent relationships

Quick quiz on informed consent

The consent form – identifying the main information required (image 6)

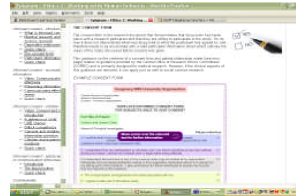
Introduction to participant information sheets & how to draft them

Another quick quiz on consent forms

Image 5



Image 6



5. Informed consent – accessibility of information

This section includes:

A short video on communicating effectively

How to present information when seeking informed consent

A task on communicating effectively (image 7)

Examples of how ethnic and cultural issues might be supported and respected in the development of a research project

Image 7



6. Informed consent - children

This section includes:

A short video on the key issues in the area of consent & children

Definition of 'child'

The importance of CRB checks

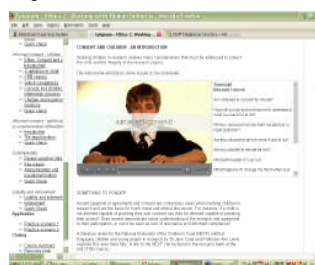
Introduction to Gillick Competency

Providing information to children

Children and experimental medicine

Quiz to consolidate learning

Image 8



7. Informed consent – adults with learning or communication difficulties

This section includes:

An introduction to the main issues

The legal position (image 9):
The Mental Capacity Act 2005
Common Law

A quiz to consolidate your learning

Image 9



8. Confidentiality

This section includes:

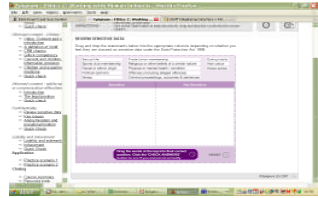
Reviewing sensitive data (image 10)

Key issues concerning confidentiality

Anonymisation and pseudonymisation

A quick quiz

Image 10



9. Liability and indemnity

This section includes:

An introduction to:

Liability

Insurance & indemnity,

Types of indemnity (negligent
harm & non-negligent harm)

Information on inducement

Quiz to consolidate your learning
(image 11)

Image 11



Other Epigeum courses
available on WebLearn:

Getting published in the Arts

Career planning in the Arts,
Humanities & Social Sciences

Getting published in the Sciences

Career planning in the Sciences

Project management in the
research context

Managing your research supervisor
or principal investigator

Intellectual property in the
research context

Selecting a conference, presenting
& networking

...and Ethics 1 – Good Research
Practice ...