

PROGRESS TO DATE...

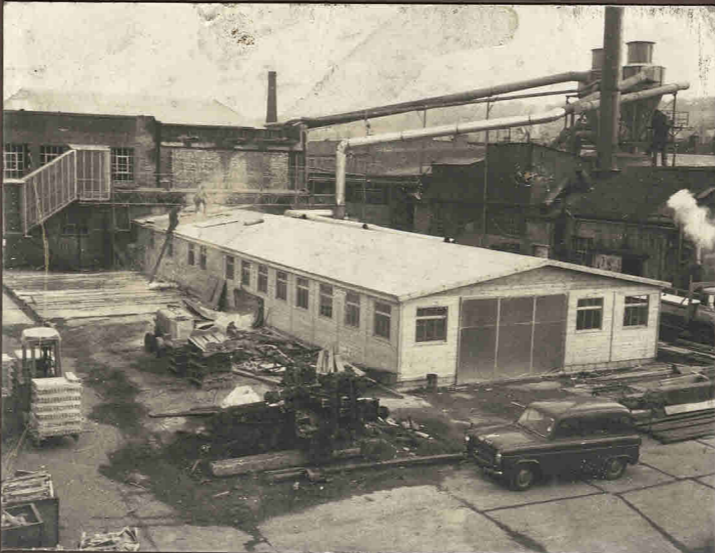
1. P.K. TEMPLE END WORKS.
Temporary general stores sited on borrowed land.
2. Where the upholstery shop used to be - clearing operation nearly complete.
3. Work as usual in the temporary extension to the mill - housing new machines.
4. Replacement machines installed and in operation (cut-off and bore machine).
5. P.K. PENN STREET WORKS.
6. Polishing booths installed on first floor.
7. Upholstery department in full swing employing full staff.
8. Sewing and tapestry cutting area also in full production.
9. Same quality and care of finished chairs ready for despatch.



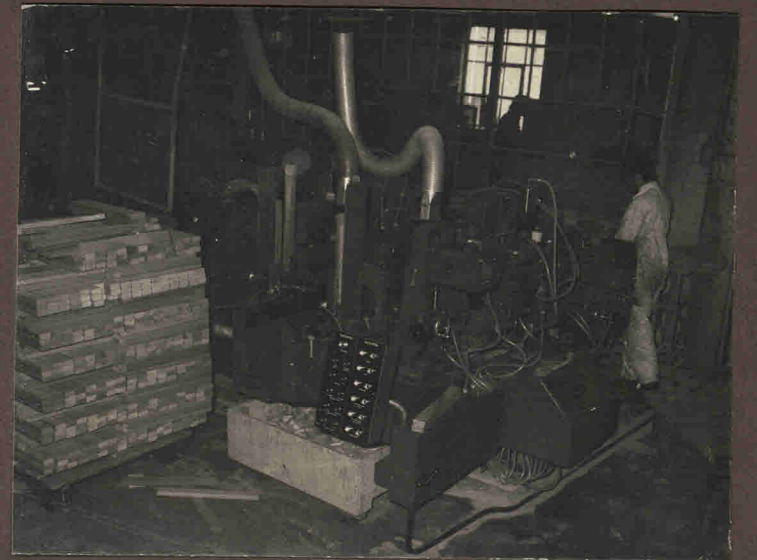
1



2



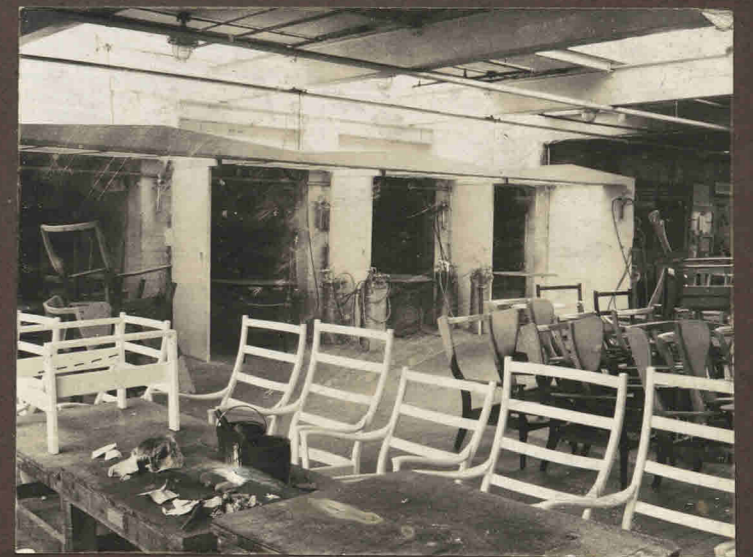
3



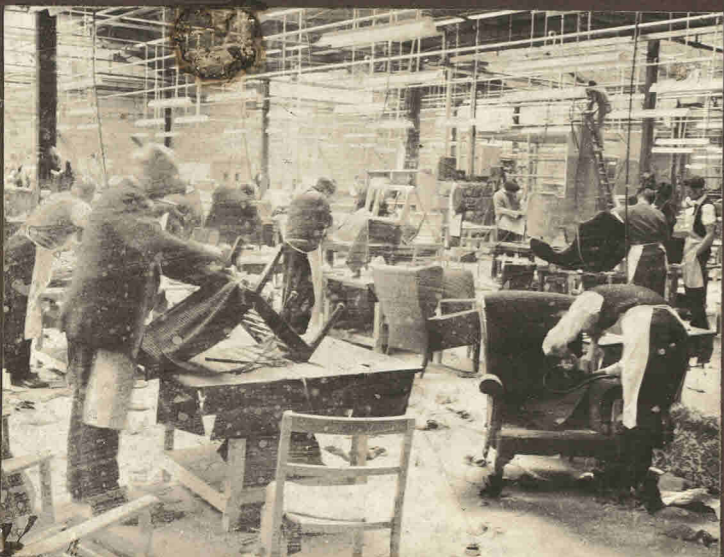
4



5



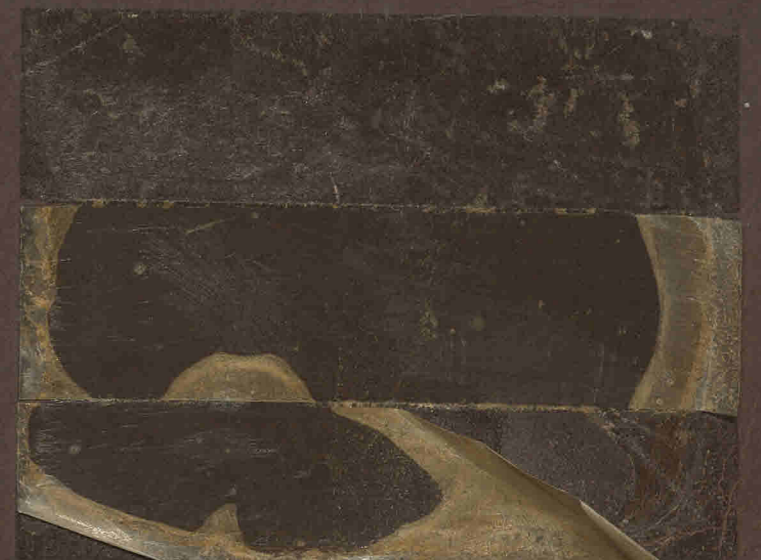
6



7



8



9